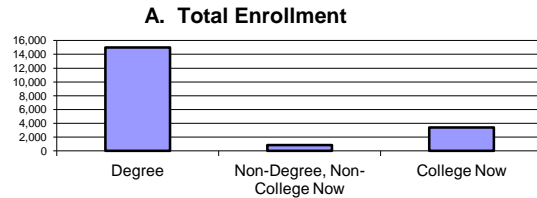


# KCC Fall 2011 At A Glance

## A. Total Enrollment

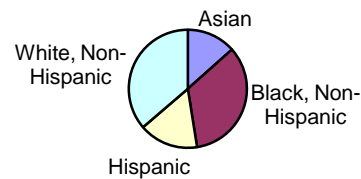
Degree	14,997
Non-Degree, Non-College Now	867
College Now	3,397
<b>Total Credit Enrollment</b>	<b>19,261</b>



## B. Race and Ethnicity

Asian	13.4%
Black, Non-Hispanic	34.0%
Hispanic	16.2%
White, Non-Hispanic	36.2%
Other	0.2%

## B. Race and Ethnicity



## C. Gender

Female	56.2%
Male	43.8%

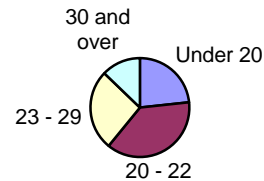
## C. Gender



## D. Age

Under 20	23.3%
20 - 22	37.6%
23 - 29	26.3%
30 and over	12.8%

## D. Age



## E. U.S. and Foreign Birth

U.S. Born	45.3%
Foreign Born	54.7%

## E. U.S. and Foreign Birth



## F. Places of Birth (among those born outside USA)

North America	2.6%
Caribbean	23.3%
Central & South America	8.4%
Europe	26.8%
Africa	4.7%
Asia	32.2%

## G. Top Five Majors

Liberal Arts	5893
Business Administration	1163
Biology	1141
Criminal Justice	1066
Accounting	580

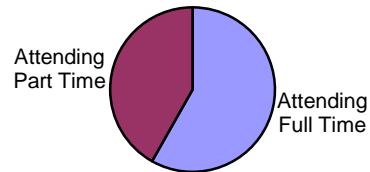
# KCC Fall 2011 At A Glance

H. Number of Native Languages 73

I. Percent Full-Time Freshmen Receiving Financial Aid (Fall 2004) 79

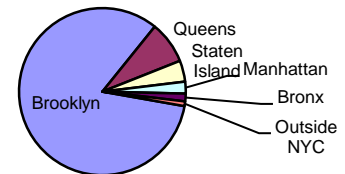
J. Full- or Part-Time Status  
 Attending Full Time 58.2%  
 Attending Part Time 41.8%

J. Full- or Part-Time Status



K. Borough of Residence (Including College Now)  
 Brooklyn 83.1%  
 Queens 8.2%  
 Staten Island 4.1%  
 Manhattan 2.3%  
 Bronx 1.5%  
 Outside NYC 0.9%

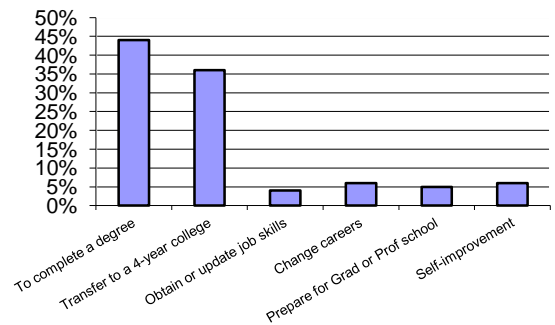
K. Residence



L. Educational Goals

Goal	Percentage
To complete a degree	44%
Transfer to a 4-year college	36%
Obtain or update job skills	4%
Change careers	6%
Prepare for Grad or Prof school	5%
Self-improvement	6%

L. Educational Goals

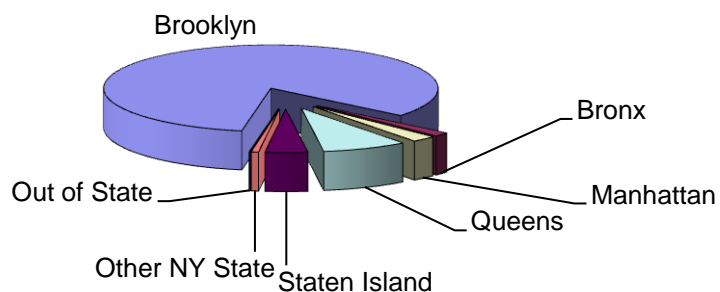


M. New Degree Student Distribution  
 First Time Freshmen 2702  
 Advanced Standing Transfer 1721  
 Readmitted 1530

N. Degrees Awarded  
 January 793  
 June 1208  
 August 549  
**Total Degrees Awarded 2550**

## Borough of Residence

Borough	Number	Percent
Brooklyn	16006	83.1%
Bronx	289	1.5%
Manhattan	443	2.3%
Queens	1579	8.2%
Staten Island	790	4.1%
Other NY State	135	0.7%
Out of State	19	0.1%
<b>Total</b>	<b>19261</b>	<b>100.0%</b>



## Top Ten Post Office Codes

Post Office Name	Zip Code	Number
Bay Station	11235	1142
Homecrest	11229	1057
Ryder	11234	1048
Bath Beach	11214	984
Canarsie	11236	885
Flatbush	11226	837
Gravesend	11223	830
Midwood	11230	811
Bensonhurst	11204	632
Bay Ridge	11220	627

## National Origin

Nation	Percent
USA and Territories	45.3%
Outside USA	54.7%
<b>Total</b>	<b>100.0%</b>

College records have considerable missing data on national origin. Information reported here only refers to students whose place of birth is known.



## Countries of Birth

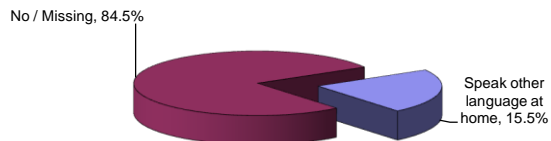
Most common birthplaces among students born outside the USA and territories.

North America	Caribbean	Central America	South America	Western Europe	Eastern Europe	Asia	Africa
<b>2.6%</b>	<b>23.3%</b>	<b>1.7%</b>	<b>6.7%</b>	<b>1.2%</b>	<b>25.4%</b>	<b>32.2%</b>	<b>4.7%</b>
	Haiti 7.8%		Ecuador 1.4%		Former Soviet Union 26.8%	China 11.2%	
	Jamaica 5.8%		Colombia 0.7%		Poland 2.0%	Pakistan 5.1%	
	Trinidad & Tobago 2.8%					Hong Kong 1.1%	
	Dominican Republic 3.0%					Philippines 1.0%	
						Israel 0.9%	
						South Korea 0.7%	
						India 0.6%	

## Second Language Background

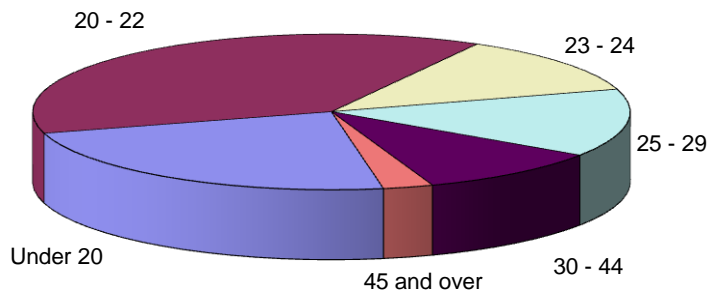
Nation	Percent
Speak other language at home	22.3%
No / Missing	77.7%
<b>Total</b>	<b>100.0%</b>

Does the student speak another language at home?  
(Degree students only)



Age  
 Fall 2007 to Fall 2011  
 Degree Students

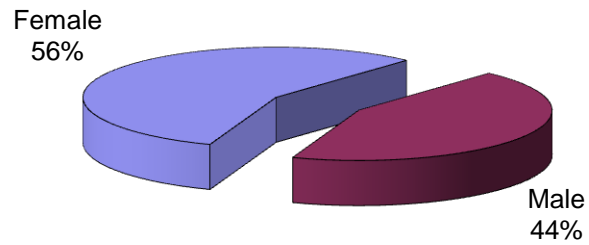
**Fall 2011 Degree Students Age Distribution**



Age	2007	2008	2009	2010	2011
Under 20	28.2%	25.4%	26.8%	25.7%	23.3%
20 - 22	32.3%	37.0%	36.6%	37.3%	37.6%
23 - 24	10.6%	10.4%	11.1%	11.6%	12.2%
25 - 29	12.4%	12.8%	12.5%	12.6%	14.1%
30 - 44	10.1%	11.1%	10.1%	10.0%	10.1%
45 and over	6.5%	3.3%	2.9%	2.8%	2.7%

## Gender Fall 2007 to Fall 2011

### Fall 2011 Enrollment of Men and Women



Fall	Female	Percent	Male	Percent	Total
2007	8630	57.7%	6332	42.3%	14962
2008	8933	56.7%	6809	43.3%	15742
2009	10170	55.9%	8034	44.1%	18204
2010	10431	56.1%	8175	43.9%	18606
2011	10829	56.2%	8432	43.8%	19261

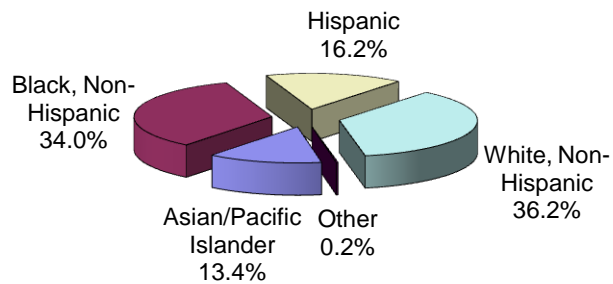
## Gender by Ethnic Background Fall 2011

Ethnicity	Female	Male
Asian/Pacific Islander	45%	55%
Black, Non-Hispanic	59%	41%
Hispanic	57%	43%
White, Non-Hispanic	56%	44%
Other	60%	40%
<b>Total</b>	<b>56%</b>	<b>44%</b>

# Ethnicity

## Fall 2007 to Fall 2011

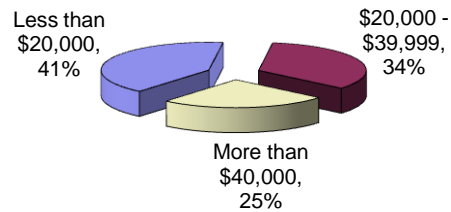
**Fall 2011 Enrollment by Ethnicity**



Ethnicity	2007	2008	2009	2010	2011
Asian/Pacific Islander	12.4%	13.3%	13.0%	13.1%	13.4%
Black, Non-Hispanic	32.3%	33.1%	33.2%	34.6%	34.0%
Hispanic	14.6%	14.6%	15.7%	16.0%	16.2%
White, Non-Hispanic	40.6%	39.0%	37.9%	36.1%	36.2%
Other	0.1%	0.1%	0.2%	0.2%	0.2%
<b>Total</b>	<b>100.0%</b>	<b>100.0%</b>	<b>100.0%</b>	<b>100.0%</b>	<b>100.0%</b>

# Household Income

Income Range	Percent
Less than \$10,000	21%
\$10,000 to \$14,999	15%
\$15,000 to \$19,999	6%
\$20,000 to \$24,999	14%
\$25,000 to \$29,999	10%
\$30,000 to \$39,999	9%
\$40,000 to \$49,999	8%
\$50,000 to \$59,999	4%
\$60,000 to \$69,999	4%
\$70,000 or more	10%
Less than \$15,000	35%
Less than \$20,000	42%
Less than \$30,000	72%
Less than \$40,000	74%
Less than \$50,000	82%



Source: 2010 CUNY Student Experience Survey

# Financial Aid

Federal and City Aid	Amount	Number
Pell	\$34,392,265	9628
Vallone Scholarships	\$133,975	325
Supplemental Educational Opportunity Grant	\$256,365	650
Federal Work Study	\$168,964	176
Perkins Loan	\$8,900	7
College Discovery Books	\$253,256	417
College Discovery Fees	\$56,700	418
Bilingual Studies Books	\$8,750	20
Bilingual Studies Fees	\$1,800	19
Direct Loan Subsidized	\$3,106,380	1134
Direct Loan Unsubsidized	\$1,392,327	645
PLUS Loans	\$9,077	3
Safety Net	\$0	0
<b>Total</b>	<b>\$39,788,759</b>	<b>10402</b>

Unduplicated Students

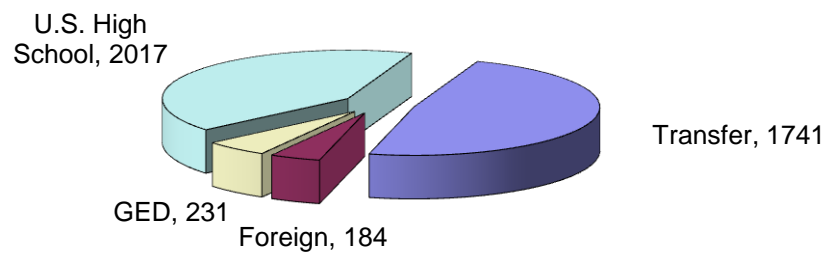
New State Aid	Amount	Number
Tuition Assistance Plan (TAP)	\$5,442,063	4643
Aid to Part Time Students	\$236,910	588
<b>Total</b>	<b>\$5,678,973</b>	<b>5231</b>

Unduplicated Students



Entering Academic Credential  
 GED, High School Diplomas, Previous College  
 Degree Students, Fall 2007 to Fall 2011

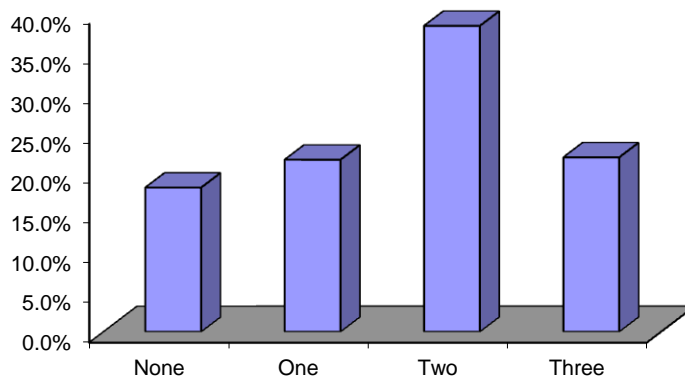
**Fall 2011 Entering Academic Credential**



	U.S. High School		Foreign Secondary School		GED		Previous College		Total
	<u>N</u>	<u>%</u>	<u>N</u>	<u>%</u>	<u>N</u>	<u>%</u>	<u>N</u>	<u>%</u>	
2007	1599	44.7%	151	4.2%	366	10.2%	1460	40.8%	3576
2008	1864	47.3%	164	4.2%	358	9.1%	1558	39.5%	3944
2009	2170	49.4%	138	3.1%	300	6.8%	1785	40.6%	4393
2010	2238	52.9%	157	3.7%	271	6.4%	1563	37.0%	4229
2011	2017	48.3%	184	4.4%	231	5.5%	1741	41.7%	4173

Basic Skills Test Performance  
 First-Time Freshmen  
 Fall 2007 to Fall 2011

Fall 2011 Freshmen - Number of Tests Passed

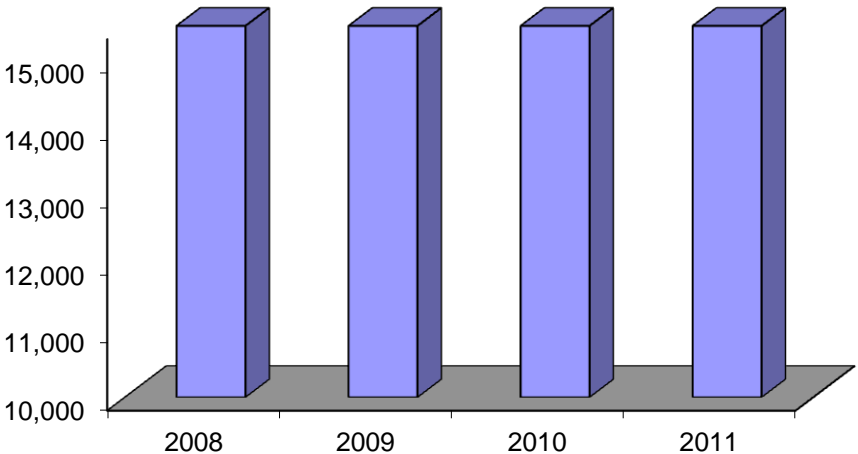


Number of Tests Passed

	2007*	2008*	2009*	2010*	2011*
None	16.9%	20.7%	21.1%	20.8%	18.1%
One	27.8%	28.9%	25.4%	22.4%	21.6%
Two	28.5%	27.0%	26.1%	30.7%	38.4%
Three	26.8%	23.4%	27.4%	26.1%	21.9%

\*Includes exemptions.

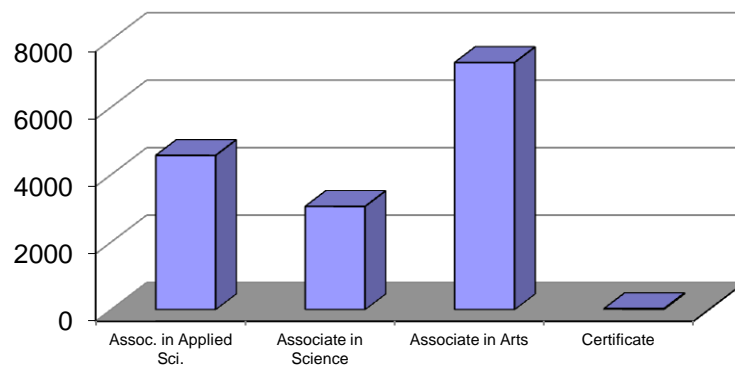
Credit Students  
Enrollment Headcount  
Fall 2007 to Fall 2010



2007	2008	2009	2010	2011
14,952	15,835	18,030	18,947	19,261

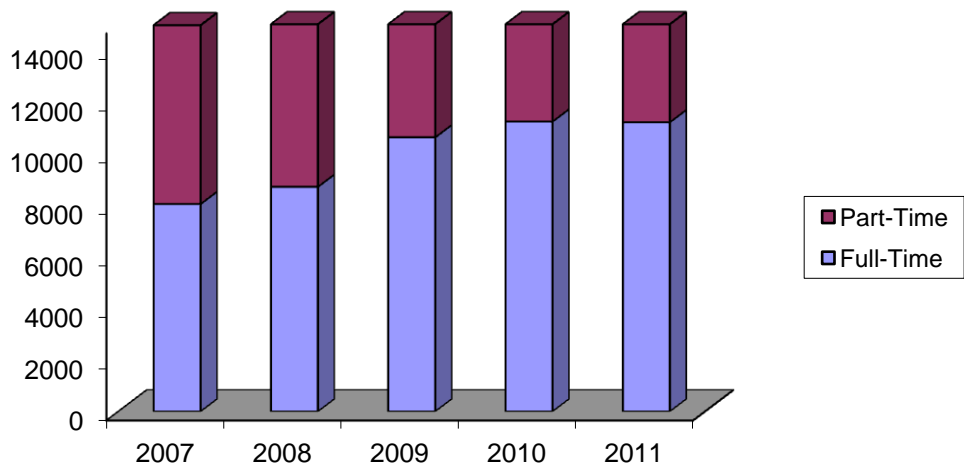
Credit Students  
By Degree Type  
Fall 2007 to Fall 2011

Fall 2011 Distribution of Degree Types



Degree Type	2007	2008	2009	2010	2011
<b><u>Degree</u></b>					
Assoc. in Applied Sci.	4640	4743	4967	4868	4574
Associate in Science	1751	2072	2838	2923	3062
Associate in Arts	4537	5076	6377	7118	7329
Certificate	17	42	39	55	32
<b>Subtotal - Degree</b>	<b>10,945</b>	<b>11,933</b>	<b>14,221</b>	<b>14,964</b>	<b>14,997</b>
<b><u>Non-Degree</u></b>					
College Now	2981	3158	2914	3212	3397
Non-College Now	1026	859	895	771	867
<b>Subtotal - Non-Degree</b>	<b>4007</b>	<b>3902</b>	<b>3809</b>	<b>3983</b>	<b>4264</b>
<b>All Students</b>	<b>14,952</b>	<b>15,835</b>	<b>18,030</b>	<b>18,947</b>	<b>19,261</b>

# Credit Students By Full-time and Part Time Status Fall 2007 to Fall 2011



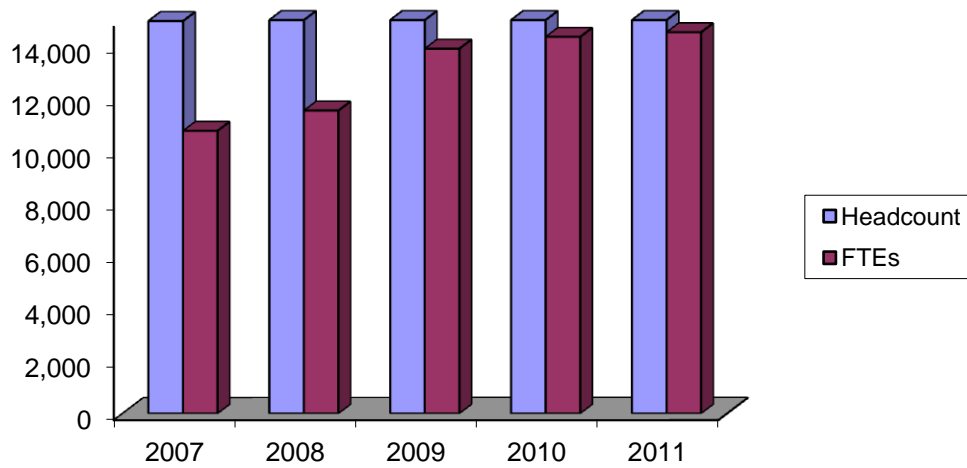
Fall	Full-Time	Percent	Part-Time	Percent	Total
2007	8038	53.7%	6924	46.3%	14,962
2008	8704	55.3%	7038	44.7%	15,742
2009	10621	58.3%	7583	41.7%	18,204
2010	11231	60.4%	7375	39.6%	18,606
2011	11205	58.2%	8056	41.8%	19,261

# Degree-Seeking Students By Major Fall 2007 to Fall 2011

	2007	2008	2009	2010	2011	1-year change	4-year change
Accounting	540	554	612	597	580	-3%	7%
Alcohol Subst Abuse Cert	7	20	18	22	13	*	*
Biology	772	912	1266	1207	1141	-5%	48%
Biotechnology	0	0	0	22	32	*	*
Broadcasting	195	173	215	216	206	-5%	6%
Business Admin.	1149	1326	1295	1167	1163	0%	1%
Chemistry	37	41	46	33	33	*	*
Chemical Dependency	0	0	0	29	44	*	*
Community Health	67	94	144	130	121	-7%	81%
Computer Info. Systems	196	223	266	283	241	-15%	23%
Computer Science	102	109	147	161	158	-2%	55%
Criminal Justice	0	0	452	768	1066	39%	*
Cul. Arts & Food Cert	2	9	10	23	10	*	*
Cul. Arts & Food AAS	0	0	0	116	174	50%	*
Early Childhood Ed. (AAS)	310	373	410	0	0	*	*
Early Childhood AS	291	298	383	445	368	-17%	26%
Early Childhood/Care AS	0	0	0	362	298	*	*
Earth/Planetary Sci	0	0	0	0	1	*	*
Education Associate	12	4	1	4	1	*	*
Engineering Science	126	173	207	199	179	-10%	42%
Entrepreneurial Studies Cert	4	5	6	3	0	*	*
Exercise Science	57	52	62	69	74	7%	30%
Exercise Science Cert	3	8	6	3	4	*	*
Fashion Design	0	0	1	84	131	56%	*
Fashion Merch.	119	146	169	147	158	7%	33%
Fine Arts	80	86	136	127	126	-1%	58%
Graphic Design	229	267	283	278	292	5%	28%
Hosp/Meet Plan Cert	0	0	0	2	1	*	*
Journalism	81	97	95	118	137	16%	69%
Journalism (AS)	12	18	35	11	4	*	*
Liberal Arts	4517	4770	5548	5906	5893	0%	30%
Maritime Technology	65	69	102	94	75	-20%	*
Maritime Tech - Deck Cert	0	0	0	1	1	*	*
Mathematics	55	64	79	67	62	-7%	13%
Medical Office Asst Cert	0	0	0	1	2	*	*
Mental Health	307	376	451	489	525	7%	71%
Nursing - Undcl Hlth	0	0	0	146	181	24%	*
Nursing I (Pre-Clinical)	491	472	469	272	137	-50%	-72%
Nursing II (Clinical)	356	369	369	362	373	3%	5%
Office Admin & Tech	126	117	127	121	123	2%	-2%
Performing Arts	79	91	97	113	110	-3%	39%
Physical Therap Asst.	66	48	66	50	55	10%	-17%
Physics	15	16	10	26	27	*	*
Pre-Physical Therapy	1	1	0	0	0	*	*
Speech Communication	60	92	95	130	126	-3%	110%
Surgical Technology	44	30	29	31	36	*	*
Tourism & Hospitality	198	226	277	246	212	-14%	7%
Website Development	25	28	25	38	33	*	*

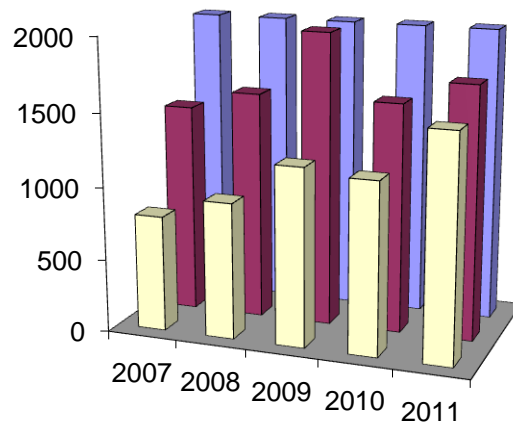
\*Percent change calculated when there are more than 50 students in each year compared.

Credit Students  
 Enrollment Headcounts  
 and Full Time Equivalents (FTE's)  
 Fall 2007 to Fall 2011



	2007	2008	2009	2010	2011
Headcount	14,962	15,742	18,204	18,606	19,261
FTEs	10,778	11,551	13,910	14,361	14,536

## New Degree-Seeking Students Fall 2007 to Fall 2011

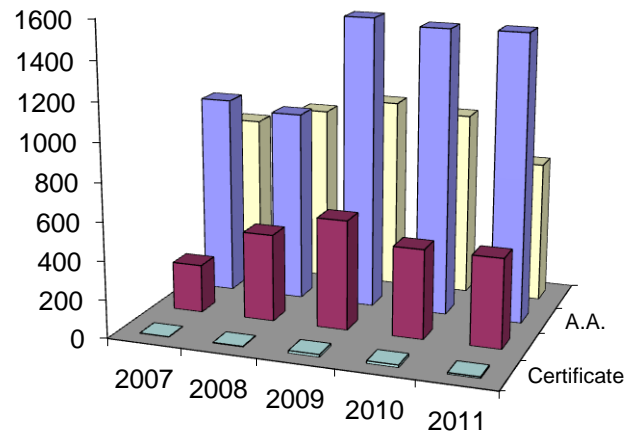


■ Readmitted Students   
 ■ Advanced Standing Transfers   
 ■ First-Time Freshmen

	2007	2008	2009	2010	2011
First-Time Freshmen	2136	2386	3111	2933	2702
Advanced Standing Transfers	1432	1558	2130	1563	1721
Readmitted Students	791	931	1216	1173	1530

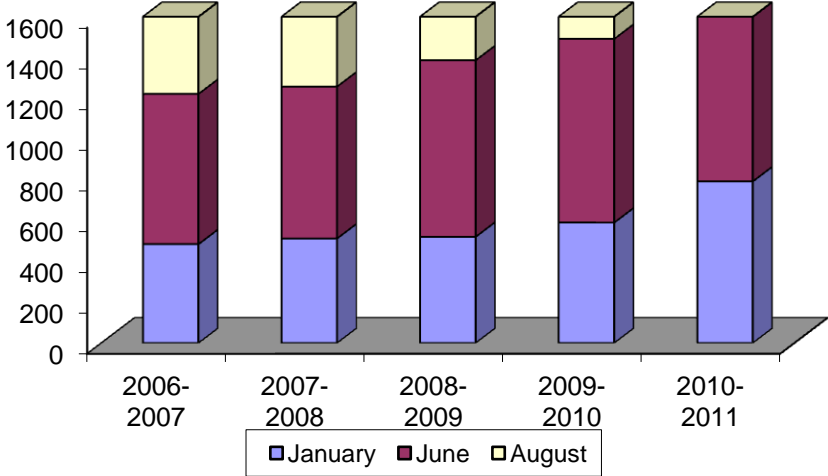


New Credit Students  
 First-Time Freshmen  
 By Degree Type  
 Fall 2007 to Fall 2011



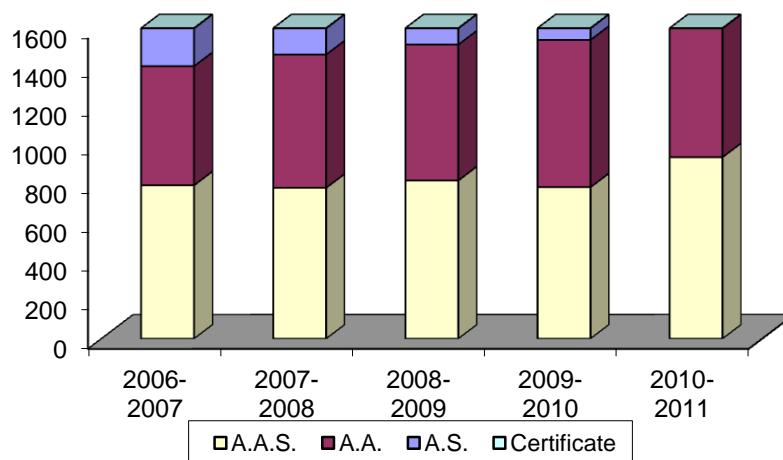
Degree	2007	2008	2009	2010	2011
A.A.	1040	994	1523	1491	1495
A.S.	252	456	572	466	465
A.A.S.	842	928	1003	963	734
Certificate	2	3	13	13	8

# Degrees and Certificates Awarded By Academic Year 2006-2007 to 2010-2011



	2006-2007	2007-2008	2008-2009	2009-2010	2010-2011
January	485	513	521	591	793
June	737	745	866	901	1208
August	462	524	500	484	549
<b>Total</b>	<b>1684</b>	<b>1782</b>	<b>1887</b>	<b>1976</b>	<b>2550</b>

# Degrees and Certificates Awarded By Degree Type 2006-2007 to 2010-2011



	<u>2006-2007</u>		<u>2007-2008</u>		<u>2008-2009</u>		<u>2009-2010</u>		<u>2010-2011</u>	
	No.	%	No.	%	No.	%	No.	%	No.	%
A.S.	272	16%	308	17%	359	19%	424	21%	546	21%
A.A.	614	36%	687	39%	700	37%	759	38%	1051	41%
A.A.S.	791	47%	778	44%	816	43%	781	40%	936	37%
Certificate	7	0%	9	1%	12	1%	12	1%	17	1%
<b>Total</b>	<b>1684</b>		<b>1782</b>		<b>1887</b>		<b>1976</b>		<b>2550</b>	

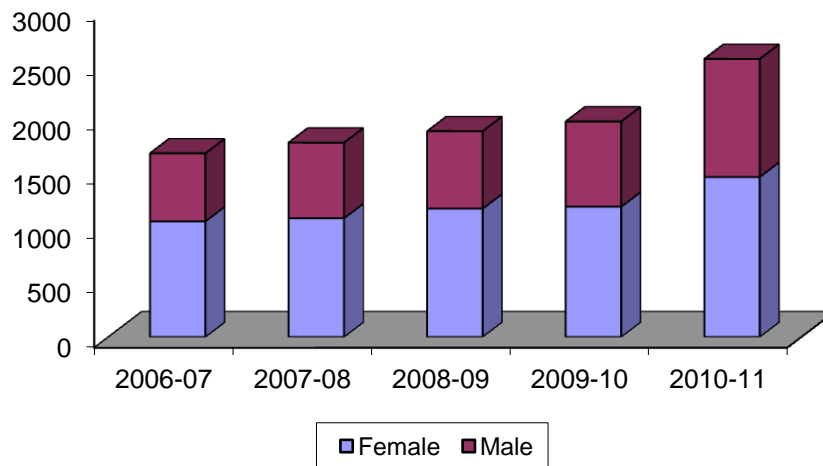
# Degrees and Certificates Awarded By Major 2006-2007 to 2010-2011

	2006- 2007	2007- 2008	2008- 2009	2009- 2010	2010- 2011	1-year change	4-year change
Accounting	134	109	121	110	156	29%	16%
Alc. & Sub. Abuse Couns.**	7	6	10	9	8	*	*
Biology	76	90	102	96	94	-2%	24%
Broadcasting	40	50	33	31	38	18%	-5%
Business Administration	201	242	250	230	263	13%	31%
Chemical Dependency	...	...	...	...	10	*	*
Chemistry	2	5	2	5	3	*	*
Community Health	4	18	20	39	41	5%	*
Computer Info. Systems	28	38	24	34	42	19%	50%
Computer Science	8	3	6	8	16	*	*
Criminal Justice	0	0	0	10	65	*	*
Cul Arts & Food Mgmt **	0	0	1	0	1	*	*
Early Childhood AS	55	33	30	86	96	10%	75%
Early Childhood Ed.	62	59	59	27	1	*	*
Education Associate	6	6	3	1	2	*	*
Engineering Science	8	8	8	11	6	*	*
Entrepreneurial Studies**	0	0	0	0	0	*	*
Exercise Science	4	9	4	6	5	*	*
Fashion Design	...	...	...	...	1	*	*
Fashion Merch.	27	14	31	35	36	3%	33%
Fine Arts	12	15	9	14	18	*	*
Graphic Design	40	32	46	45	54	17%	35%
Journalism & Print Media	4	9	10	17	17	*	*
Liberal Arts	614	687	700	749	987	24%	61%
Maritime Mechanic Cert	...	...	...	1	6	*	*
Maritime Tech-Deck Cert	0	3	1	3	2	*	*
Maritime Technology	6	9	11	11	15	*	*
Mathematics	3	7	15	17	15	*	*
Mental Health	79	62	83	98	128	23%	62%
Nursing	121	118	137	131	160	18%	32%
Office Admin & Tech	23	25	20	20	26	*	*
Performing Arts	12	16	13	12	11	*	*
Physical Therap. Asst.	12	14	17	13	13	*	*
Physics	2	1	2	3	13	*	*
Speech Communication	22	20	30	17	39	*	*
Sports Fitn Ther Rec	22	17	22	24	37	*	*
Surgical Technology	6	12	15	10	11	*	*
Tourism & Hospitality	42	43	43	50	68	26%	62%
Website Development	2	2	9	3	10	*	*

\*Percent change calculated when there are more than 25 students in each year compared.

\*\*Certificate

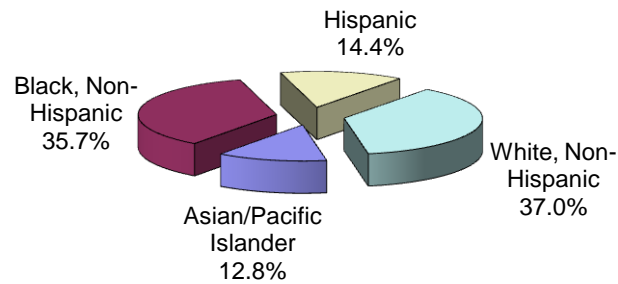
# Degrees and Certificates Awarded By Gender 2006-2007 to 2010-2011



	Female	%	Male	%
2006-07	1061	63%	623	37%
2007-08	1089	61%	693	39%
2008-09	1177	62%	710	38%
2009-10	1195	60%	781	40%
2010-11	1468	58%	1082	42%

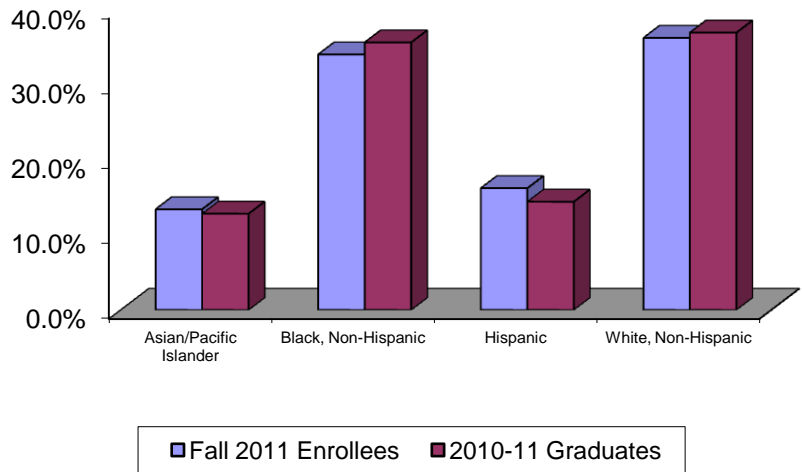
# Degrees and Certificates Awarded By Ethnicity 2006-2007 to 2010-2011

## 2010-11 Graduates by Ethnicity



Ethnicity	2006-07	2007-08	2008-09	2009-10	2010-11
Asian/Pacific Islander	10.9%	11.5%	12.6%	14.0%	12.8%
Black, Non-Hispanic	34.7%	31.6%	31.6%	31.8%	35.6%
Hispanic	13.9%	12.4%	12.0%	13.9%	14.4%
White, Non-Hispanic	40.3%	44.2%	43.7%	40.2%	36.9%
Other	0.2%	0.3%	0.1%	0.1%	0.3%
<b>Total</b>	<b>100.0%</b>	<b>100.0%</b>	<b>100.0%</b>	<b>100.0%</b>	<b>100.0%</b>

# Comparative Distributions of Graduates and Enrollees By Ethnicity 2010-2011



Ethnicity	Fall 2011 Enrollees	2010-11 Graduates
Asian/Pacific Islander	13.4%	12.8%
Black, Non-Hispanic	34.0%	35.6%
Hispanic	16.2%	14.4%
White, Non-Hispanic	36.2%	36.9%
Other	0.2%	0.3%
<b>Total</b>	<b>100.0%</b>	<b>100.0%</b>

## Full Time and Part Time Employment, Job Category and Gender Fall 2011



Full Time	Female	%	Male	%
Administrative Staff	134	30%	72	17%
Clerical and Classified Staff	95	21%	141	34%
Executive Staff	4	1%	12	3%
Faculty	195	43%	159	39%
Technical and Paraprofessional	22	5%	28	7%
<b>Full Time Total</b>	<b>450</b>	<b>100%</b>	<b>412</b>	<b>100%</b>

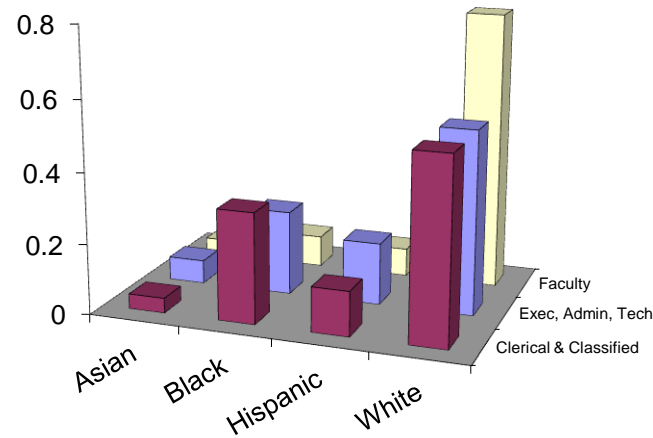
Part Time	Female	%	Male	%
Administrative Staff	82	11%	45	9%
Clerical and Classified Staff	316	42%	128	27%
Faculty	315	42%	275	58%
Technical and Paraprofessional	38	5%	29	6%
<b>Part Time Total</b>	<b>751</b>	<b>100%</b>	<b>477</b>	<b>100%</b>

Full Time and Part Time	Female	%	Male	%
Administrative Staff	216	18%	117	13%
Clerical and Classified Staff	411	34%	269	30%
Executive Staff	4	0%	12	1%
Faculty	510	42%	434	49%
Technical and Paraprofessional	60	5%	57	6%
<b>Full and Part Time Total</b>	<b>1201</b>	<b>100%</b>	<b>889</b>	<b>100%</b>

Note. Includes substitute appointments.



Full Time Employees  
By Job Category and Racial/Ethnic Origin  
Fall 2011

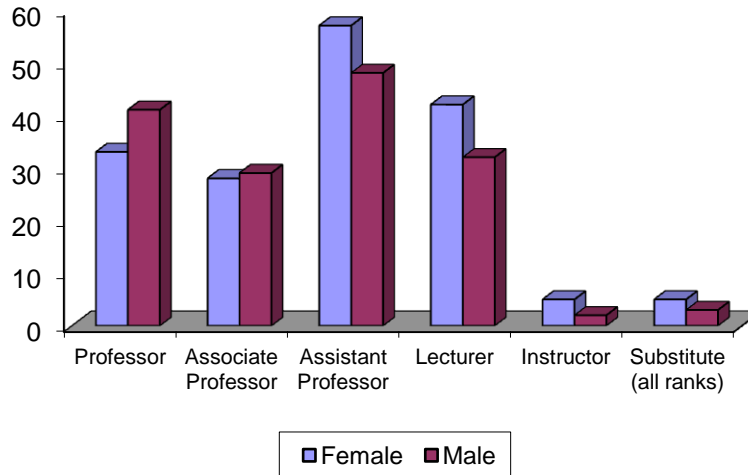


Job Category	Asian & Pacific Islander		Black, Non-Hispanic		Hispanic		Native Am & Alaska Native		White, Non-Hispanic		Total
	N	%	N	%	N	%	N	%	N	%	
Administrative Staff	18	9%	60	29%	47	23%	0	0%	82	40%	207
Clerical and Classified Staff	10	4%	74	31%	37	16%	0	0%	115	49%	236
Executive Staff	2	13%	0	0%	1	6%	0	0%	13	81%	16
Faculty	21	6%	38	11%	32	9%	2	1%	265	74%	358
Technical and Paraprofessional	1	2%	11	22%	7	14%	0	0%	31	62%	50
<hr/>											
Subtotal Exec Admin Tech	21	8%	71	26%	55	20%	0	0%	126	46%	273
<b>Total</b>	<b>52</b>	<b>6%</b>	<b>183</b>	<b>21%</b>	<b>124</b>	<b>14%</b>	<b>2</b>	<b>0%</b>	<b>506</b>	<b>58%</b>	<b>867</b>

Full Time Employees  
 By Job Category, Gender and  
 Racial/Ethnic Origin, Fall 2011

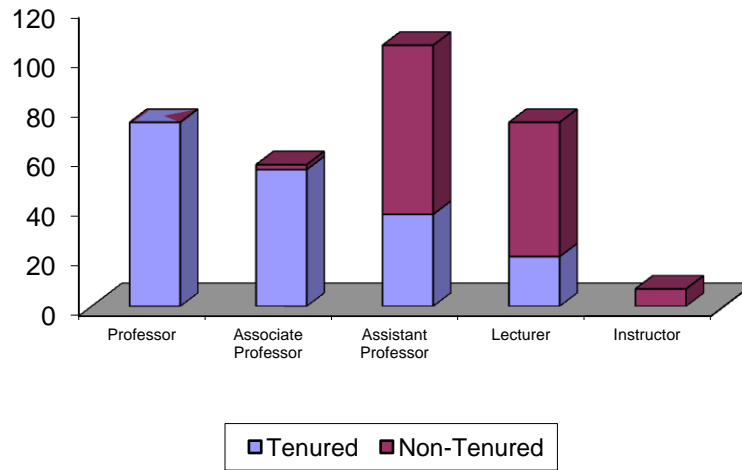
Job Category		Asian & Pacific Islander		Black, Non-Hispanic		Hispanic		Native Am & Alaska Native		White, Non-Hispanic		Total
		N	%	N	%	N	%	N	%	N	%	
Administrative Staff	Female	9	7%	39	29%	32	24%	0	0%	54	40%	134
	Male	9	12%	21	29%	15	21%	0	0%	28	38%	73
Clerical and Classified Staff	Female	1	1%	24	25%	9	9%	0	0%	61	64%	95
	Male	9	6%	50	35%	28	20%	0	0%	54	38%	141
Executive Staff	Female	0	0%	0	0%	0	0%	0	0%	4	100%	4
	Male	2	17%	0	0%	1	8%	0	0%	9	75%	12
Faculty	Female	10	5%	24	12%	18	9%	1	1%	145	73%	198
	Male	11	7%	14	9%	14	9%	1	1%	120	75%	160
Technical and Paraprofessional	Female	1	5%	6	27%	2	9%	0	0%	13	59%	22
	Male	0	0%	6	20%	6	20%	0	0%	18	60%	30
<b>Total</b>		<b>52</b>	<b>6%</b>	<b>184</b>	<b>21%</b>	<b>125</b>	<b>14%</b>	<b>2</b>	<b>0%</b>	<b>506</b>	<b>58%</b>	<b>869</b>

Full Time Faculty  
By Rank and Gender  
Fall 2011



Faculty Rank	Female	% of Females	Male	% of Males	Total
Professor	24	12.3%	35	22.0%	59
Associate Professor	32	16.4%	33	20.8%	65
Assistant Professor	79	40.5%	51	32.1%	130
Lecturer	23	11.8%	36	22.6%	59
Instructor	2	1.0%	2	1.3%	4
Substitute (all ranks)	35	17.9%	2	1.3%	37
<b>Total</b>	<b>195</b>	<b>100.0%</b>	<b>159</b>	<b>100.0%</b>	<b>354</b>

Full Time Faculty  
By Tenure Status  
Fall 2011



Faculty Rank	Tenured	%	Non-Tenured	%	Total
Professor	59	100.0%	0	0.0%	59
Associate Professor	61	93.8%	4	6.2%	65
Assistant Professor	37	28.5%	93	71.5%	130
Lecturer	0	0.0%	59	100.0%	59
Instructor	0	0.0%	4	100.0%	4
<b>Total</b>	<b>157</b>	<b>49.5%</b>	<b>160</b>	<b>50.5%</b>	<b>317</b>

# Library Operations

## FY 2010 and 2011

Library Operations	FY2010	FY2011
<b><u>Staff (FTE)</u></b>		
Librarians	10	10
Other Paid Staff	20	20
Student Assistants	42	42
<b>Total FTE Staff</b>		
<b><u>Expenditures</u></b>		
Total Salaries and Wages	\$1,445,504	\$1,412,074
Books; Serial Subscriptions	\$314,129	\$255,654
Supplies - Office	\$11,216	\$12,454
Other Operating Expenditures	\$41,947	\$46,539
<b>Total Expenditures</b>	<b>\$1,812,796</b>	<b>\$1,726,721</b>
<b><u>Collections</u></b>		
Books, Serial Backfiles, Other Paper Materials	219,622	305,543
E-Book Titles	126,533	152,551
Microforms	10,497	10,498
Audiovisual Materials	2,692	2,828
Current Serial Subscriptions	271	286
Current Electronic Serial Titles	45,656	71,972
Electronic Reference and Aggregation Services	83	95
<b><u>Library Services</u></b>		
Interlibrary Loans Provided	751	723
Interlibrary Loans Received	214	266
General Circulation Transactions	84,788	98,268
Reserve Circulation Transactions	42,101	49,166
Presentations of Information Services to Groups	312	313
Total Attendance at Presentations	8,688	8,764
<b><u>Library Services, Typical Week</u></b>		
Hours Open in a Typical Week	81	81
Gate Count in a Typical Week	19,698	21,821
Reference Transactions in a Typical Week	1,500	1,550

Expenditures by Major Purpose  
Fiscal Years 2010 and 2011  
Operating Budget

Major Purpose	Expenditure Category	FY 2010 Expenditures	FY 2011 Expenditures
<b>Instruction &amp; Departmental Research:</b>	P.S. Regular	\$29,479,259.00	\$31,429,302.55
	P.S. Adjunct	\$12,471,532.00	\$14,018,483.38
	P.S. Temp	<u>\$3,322,378.00</u>	<u>\$3,404,030.97</u>
	Total P.S.	\$45,273,169.00	\$48,851,816.90
	O.T.P.S.	<u>\$1,619,537.00</u>	\$1,550,686.78
	Total P.S. & O.T.P.S.	\$46,892,706.00	\$50,402,503.68
<b>Academic Support Services:*</b>	P.S. Regular	\$2,525,354.00	\$2,558,200.90
	P.S. Adjunct	\$328,718.00	\$141,791.91
	P.S. Temp	<u>\$810,166.00</u>	<u>\$1,233,382.22</u>
	Total P.S.	\$3,664,238.00	\$3,933,375.03
	O.T.P.S.	<u>\$512,596.00</u>	<u>\$617,813.09</u>
	Total P.S. & O.T.P.S.	\$4,176,834.00	\$4,551,188.12
<b>Student Services:</b>	P.S. Regular	\$6,165,069.00	\$6,735,228.15
	P.S. Adjunct	\$120,030.00	\$166,618.06
	P.S. Temp	<u>\$3,006,602.00</u>	<u>\$3,325,985.28</u>
	Total P.S.	\$9,291,701.00	\$10,227,831.49
	O.T.P.S.	<u>\$1,822,801.00</u>	<u>\$1,398,456.51</u>
	Total P.S. & O.T.P.S.	\$11,114,502.00	\$11,626,288.00
<b>Maintenance &amp; Operation Plant:</b>	P.S. Regular	\$7,736,118.00	\$7,542,879.65
	P.S. Temp	<u>\$397,898.00</u>	<u>\$440,508.38</u>
	Total P.S.	\$8,134,016.00	\$7,983,388.03
	O.T.P.S.	<u>\$1,869,122.00</u>	<u>\$2,182,735.86</u>
	Total P.S. & O.T.P.S.	\$10,003,138.00	\$10,166,123.89
<b>General Administration:</b>	P.S. Regular	\$4,121,493.00	\$4,100,962.43
	P.S. Temp	<u>\$437,784.00</u>	<u>\$338,399.26</u>
	Total P.S.	\$4,559,277.00	\$4,439,361.69
	O.T.P.S.	<u>\$1,342,209.00</u>	<u>\$1,401,265.42</u>
	Total P.S. & O.T.P.S.	\$5,901,486.00	\$5,840,627.11
<b>General Institutional Service:</b>	P.S. Regular	\$4,606,534.00	\$4,902,101.30
	P.S. Temp	<u>\$163,389.00</u>	<u>\$182,261.33</u>
	Total P.S.	\$4,769,923.00	\$5,084,362.63
	O.T.P.S.	<u>\$2,675,628.00</u>	<u>\$1,795,859.60</u>
	Total P.S. & O.T.P.S.	\$7,445,551.00	\$6,880,222.23
<b>College Discovery:</b>	P.S. Regular	\$403,607.00	\$428,590.28
	P.S. Temp	<u>\$55,225.00</u>	<u>\$46,863.84</u>
	Total P.S.	\$458,832.00	\$475,454.12
	O.T.P.S.	<u>\$16,766.00</u>	<u>\$25,276.54</u>
	Total P.S. & O.T.P.S.	\$475,598.00	\$500,730.66
<b>Technology Fee:</b>	P.S. Regular	\$0.00	\$0.00
	P.S. Temp	<u>\$550,042.00</u>	<u>\$500,000.00</u>
	Total P.S.	\$550,042.00	\$500,000.00
	O.T.P.S.	<u>\$1,942,236.00</u>	<u>\$2,029,629.08</u>
	Total P.S. * O.T.P.S.	\$2,492,278.00	\$2,529,629.08
<b>Adult &amp; Continuing Education:</b>	P.S. Regular	\$220,579.00	\$157,511.82
	P.S. Adjunct	\$2,336,399.00	\$1,757,485.66
	P.S. Temp	<u>\$187,676.00</u>	<u>\$396,467.48</u>
	Total P.S.	\$2,744,654.00	\$2,311,464.96
	O.T.P.S.	<u>\$675,007.00</u>	<u>\$326,687.37</u>
	Total P.S. * O.T.P.S.	\$3,419,661.00	\$2,638,152.33
<b>Total - Tax Levy:</b>	P.S. Regular	\$55,258,013.00	\$57,854,777.08
	P.S. Adjunct	\$15,256,679.00	\$16,084,379.01
	P.S. Temp	<u>\$8,931,160.00</u>	<u>\$9,867,898.76</u>
	Total P.S.	\$79,445,852.00	\$83,807,054.85
	O.T.P.S.	<u>\$12,475,902.00</u>	<u>\$11,328,410.25</u>
	Total P.S. & O.T.P.S.	\$91,921,754.00	\$95,135,465.10

\*Academic Support Services includes Library, Organized Research, Organized Activities, Extension & Public Services and the CUNY Language Immersion Program

The City University of New York budgets Fringe Benefits and Heat, Light & Power centrally.