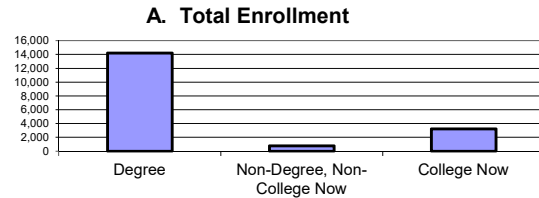


KCC Fall 2009 At A Glance

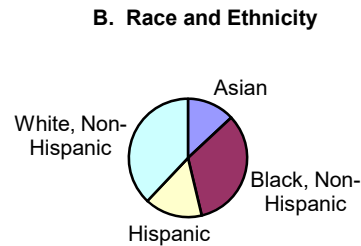
A. Total Enrollment

Degree	14,221
Non-Degree, Non-College Now	771
College Now	3212
Total Credit Enrollment	18,204



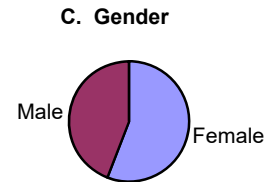
B. Race and Ethnicity

Asian	13.0%
Black, Non-Hispanic	33.2%
Hispanic	15.7%
White, Non-Hispanic	37.9%
Other	0.2%



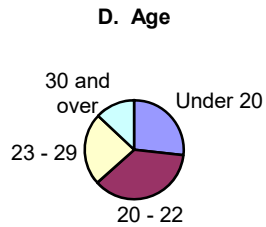
C. Gender

Female	55.9%
Male	44.1%



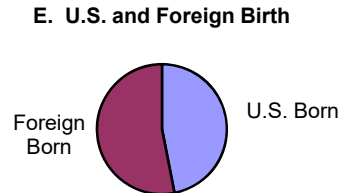
D. Age

Under 20	26.8%
20 - 22	36.6%
23 - 29	23.6%
30 and over	13.0%



E. U.S. and Foreign Birth

U.S. Born	46.9%
Foreign Born	53.1%



F. Places of Birth (among those born outside USA)

North America	2.3%
Caribbean	24.9%
Central & South America	7.9%
Europe	31.3%
Africa	5.0%
Asia	28.6%

G. Top Five Majors

Liberal Arts	5548
Business Administration	1295
Biology	1266
Accounting	612
Nursing I (Pre-Clinical)	469

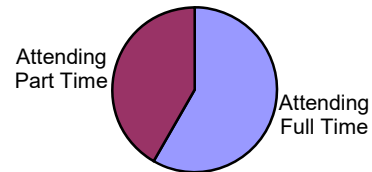
KCC Fall 2009 At A Glance

H. Number of Native Languages 73

I. Percent Full-Time Freshmen Receiving Financial Aid (Fall 2004) 70

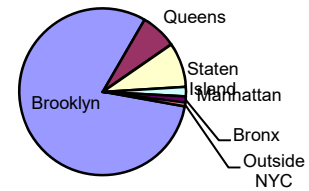
J. Full- or Part-Time Status
 Attending Full Time 58.3%
 Attending Part Time 41.7%

J. Full- or Part-Time Status



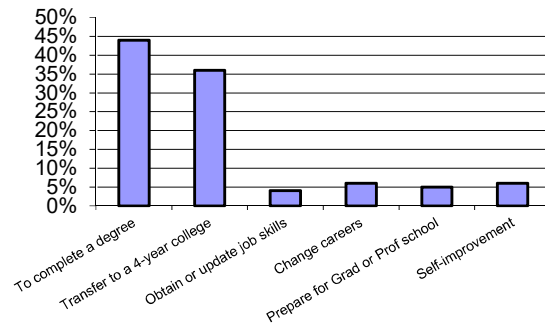
K. Borough of Residence (Including College Now)
 Brooklyn 80.6%
 Queens 7.0%
 Staten Island 8.7%
 Manhattan 1.8%
 Bronx 1.2%
 Outside NYC 0.7%

K. Residence



L. Educational Goals
 Primary Goal
 To complete a degree 44%
 Transfer to a 4-year college 36%
 Obtain or update job skills 4%
 Change careers 6%
 Prepare for Grad or Prof school 5%
 Self-improvement 6%

L. Educational Goals

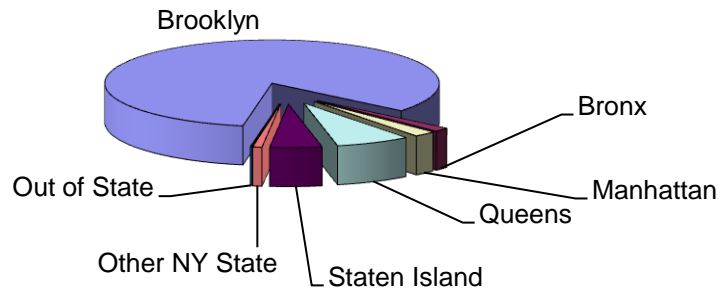


M. New Degree Student Distribution
 First Time Freshmen 3111
 Advanced Standing Transfer 2130
 Readmitted 1216

N. Degrees Awarded
 January 521
 June 866
 August 500
Total Degrees Awarded 1887

Borough of Residence

Borough	Number	Percent
Brooklyn	15146	83.2%
Bronx	273	1.5%
Manhattan	382	2.1%
Queens	1311	7.2%
Staten Island	910	5.0%
Other NY State	161	0.9%
Out of State	21	0.1%
Total	18204	100.0%



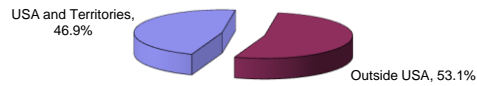
Top Ten Post Office Codes

Post Office Name	Zip Code	Number
Bay Station	11235	1096
Ryder	11234	1049
Homecrest	11229	985
Bath Beach	11214	915
Canarsie	11236	884
Flatbush	11226	770
Gravesend	11223	754
Midwood	11230	754
Bay Ridge	11220	635
Mapleton	11204	583

National Origin

Nation	Percent
USA and Territories	46.9%
Outside USA	53.1%
Total	100.0%

College records have considerable missing data on national origin. Information reported here only refers to students whose place of birth is known.



Countries of Birth

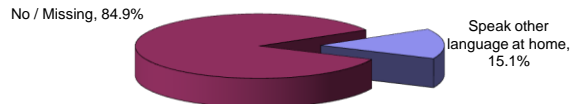
Most common birthplaces among students born outside the USA and territories.

North America	Caribbean	Central America	South America	Western Europe	Eastern Europe	Asia	Africa
2.3%	24.9%	2.8%	5.1%	1.8%	29.5%	28.6%	5.0%
	Haiti 6.9%		Ecuador 1.3%		Former Soviet Union 19.2%	China 10.9%	
	Jamaica 5.0%		Colombia 0.7%		Poland 2.3%	Pakistan 5.2%	
	Trinidad & Tobago 3.1%					Hong Kong 1.1%	
	Dominican Republic 2.8%					Israel 0.9%	
						Philippines 0.8%	
						India 0.7%	
						South Korea 0.6%	

Second Language Background

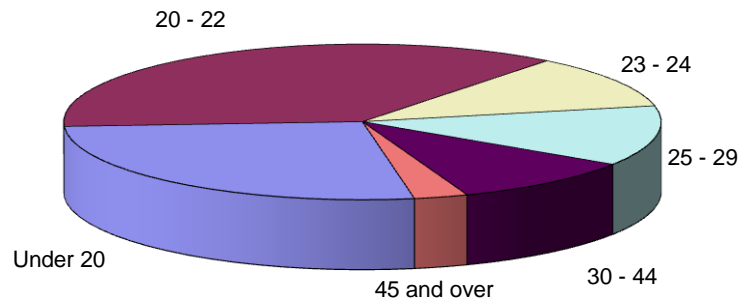
Does the student speak another language at home?
(Degree students only)

Nation	Percent
Speak other language at home	15.1%
No / Missing	84.9%
Total	100.0%



Age
 Fall 2005 to Fall 2009
 Degree Students

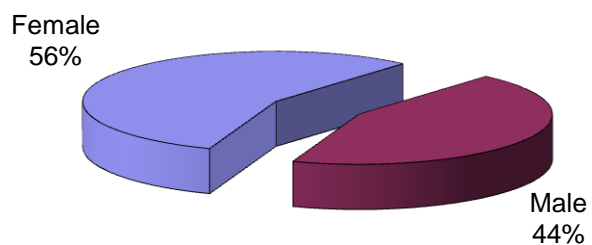
Fall 2009 Degree Students Age Distribution



Age	2005	2006	2007	2008	2009
Under 20	23.3%	23.5%	28.2%	25.4%	26.8%
20 - 22	35.7%	35.2%	32.3%	37.0%	36.6%
23 - 24	11.8%	12.0%	10.6%	10.4%	11.1%
25 - 29	12.5%	12.7%	12.4%	12.8%	12.5%
30 - 44	13.2%	12.8%	10.1%	11.1%	10.1%
45 and over	3.5%	3.7%	6.5%	3.3%	2.9%

Gender Fall 2005 to Fall 2009

Fall 2009 Enrollment of Men and Women



Fall	Female	Percent	Male	Percent	Total
2005	8996	58.9%	6269	41.1%	15265
2006	8584	58.4%	6173	42.0%	14689
2007	8630	57.7%	6332	42.3%	14962
2008	8933	56.7%	6809	43.3%	15742
2009	10170	55.9%	8034	44.1%	18204

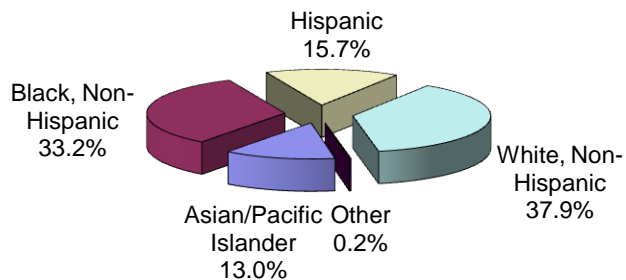
Gender by Ethnic Background Fall 2009

Ethnicity	Female	Male
Asian/Pacific Islander	47%	53%
Black, Non-Hispanic	60%	40%
Hispanic	56%	44%
White, Non-Hispanic	56%	44%
Other	57%	43%
Total	56%	44%

Ethnicity

Fall 2005 to Fall 2009

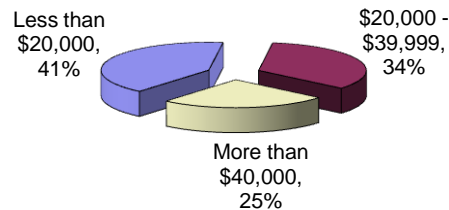
Fall 2009 Enrollment by Ethnicity



Ethnicity	2005	2006	2007	2008	2009
Asian/Pacific Islander	11.8%	12.4%	12.4%	13.3%	13.0%
Black, Non-Hispanic	32.6%	32.0%	32.3%	33.1%	33.2%
Hispanic	14.4%	14.4%	14.6%	14.6%	15.7%
White, Non-Hispanic	41.0%	41.1%	40.6%	39.0%	37.9%
Other	0.1%	0.1%	0.1%	0.1%	0.2%
Total	100.0%	100.0%	100.0%	100.0%	100.0%

Household Income

Income Range	Percent
Less than \$10,000	20%
\$10,000 to \$14,999	11%
\$15,000 to \$19,999	11%
\$20,000 to \$24,999	10%
\$25,000 to \$29,999	9%
\$30,000 to \$39,999	13%
\$40,000 to \$49,999	8%
\$50,000 to \$59,999	5%
\$60,000 to \$69,999	3%
\$70,000 or more	9%
Less than \$15,000	57%
Less than \$20,000	9%
Less than \$30,000	14%
Less than \$40,000	10%
Less than \$50,000	4%



Source: 2006 CUNY Student Experience Survey

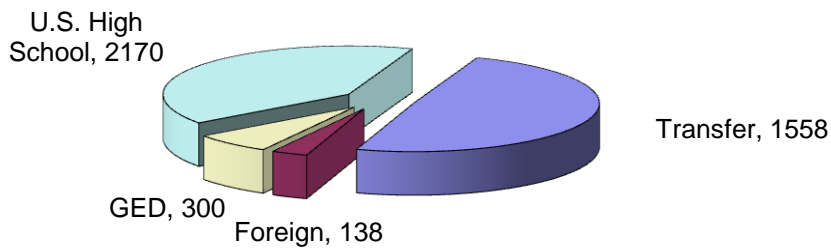
Financial Aid

Federal and City Aid	Amount	Number	
Pell	\$34,392,265	9628	
Vallone Scholarships	\$133,975	325	
Supplemental Educational Opportunity Grant	\$256,365	650	
Federal Work Study	\$168,964	176	
Perkins Loan	\$8,900	7	
College Discovery Books	\$253,256	417	
College Discovery Fees	\$56,700	418	
Bilingual Studies Books	\$8,750	20	
Bilingual Studies Fees	\$1,800	19	
Direct Loan Subsidized	\$3,106,380	1134	
Direct Loan Unsubsidized	\$1,392,327	645	
PLUS Loans	\$9,077	3	
Safety Net	\$0	0	
Total	\$39,788,759	10402	Unduplicated Students

New State Aid	Amount	Number	
Tuition Assistance Plan (TAP)	\$5,442,063	4643	
Aid to Part Time Students	\$236,910	588	
Total	\$5,678,973	5231	Unduplicated Students

Entering Academic Credential
 GED, High School Diplomas, Previous College
 Degree Students, Fall 2005 to Fall 2009

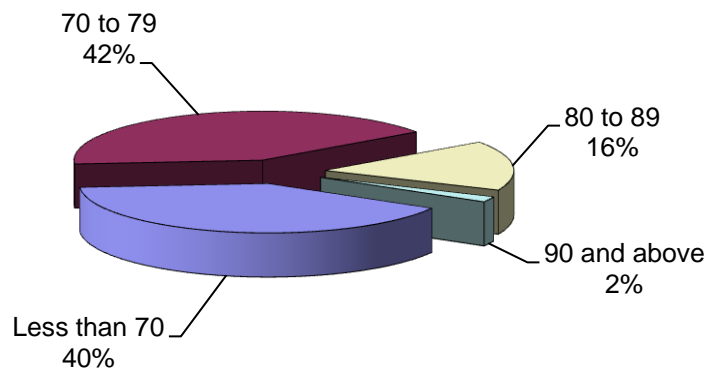
Fall 2009 Entering Academic Credential



	U.S. High School		Foreign Secondary School		GED		Previous College		Total
	<u>N</u>	<u>%</u>	<u>N</u>	<u>%</u>	<u>N</u>	<u>%</u>	<u>N</u>	<u>%</u>	
2005	1333	40.6%	194	5.9%	443	13.5%	1316	40.0%	3286
2006	1418	42.5%	170	5.1%	389	11.7%	1359	40.7%	3336
2007	1599	44.7%	151	4.2%	366	10.2%	1460	40.8%	3576
2008	1864	47.3%	164	4.2%	358	9.1%	1558	39.5%	3944
2009	2170	49.4%	138	3.1%	300	6.8%	1785	40.6%	4393

High School Averages First-Time Freshmen Fall 2005 to Fall 2009

Fall 2009 Freshmen - High School Averages



	Less than 70		70 to 79		80 to 89		90 and above		Total
	N	%	N	%	N	%	N	%	
2005	363	25.6%	805	56.7%	211	14.9%	41	2.9%	1420
2006	394	26.8%	809	55.0%	228	15.5%	41	2.8%	1472
2007	395	30.5%	631	48.7%	235	18.1%	36	2.8%	1297
2008	477	35.3%	642	47.6%	201	14.9%	30	2.2%	1350
2009	1088	40.4%	1115	41.4%	440	16.4%	48	1.8%	2691

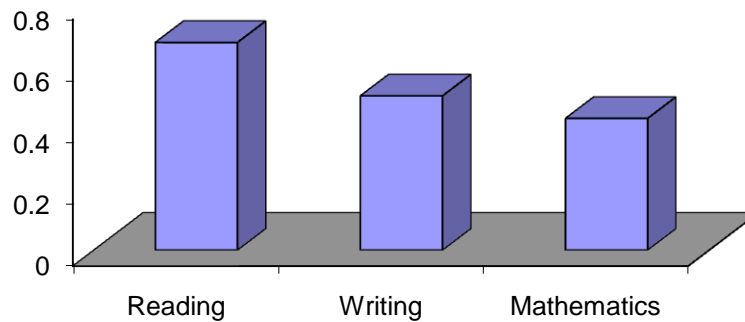
First-Time Freshmen
 Selected High Schools
 Fall 2005 to Fall 2009

High School	2005	2006	2007	2008	2009
Abraham Lincoln	64	63	63	67	112
Beach Channel	8	11	19	12	25
Bishop Ford	8	14	16	16	14
Bishop Kearney	21	19	17	12	12
Canarsie	28	22	23	37	37
Clara Barton	18	23	23	23	35
Edward R. Murrow	52	47	58	65	104
F.D. Roosevelt	42	61	65	85	98
Foreign	194	170	151	164	17
Fort Hamilton	48	48	56	69	95
George W. Wingate	8	16	2	2	2
James Madison	131	112	140	161	171
John Dewey	34	44	40	71	66
KCC GED	72*	54*	67*	47*	48*
Lafayette	30	28	27	21	15
Leon M. Goldstein	25	30	25	33	41
Midwood	41	33	40	57	74
New Utrecht	56	47	59	70	89
Other GED	371	335	299	311	282
Out of State	56	58	66	82	109
Sheepshead Bay	42	48	43	65	65
South Shore	23	22	39	25	21
Thomas Jefferson	7	15	10	2	4
W.E. Grady	8	10	10	14	18
Xaverian	21	15	17	12	21
Total From This Group	1408	1345	1375	1523	1527
All Freshmen	1970	1977	2136	2386	3111

*University admission data supplemented by KCC data starting in Fall 2003.

Basic Skills Needs
 First-Time Freshmen
 Fall 2005 to Fall 2009

**Percent of Fall 2009
 Freshmen Passing**



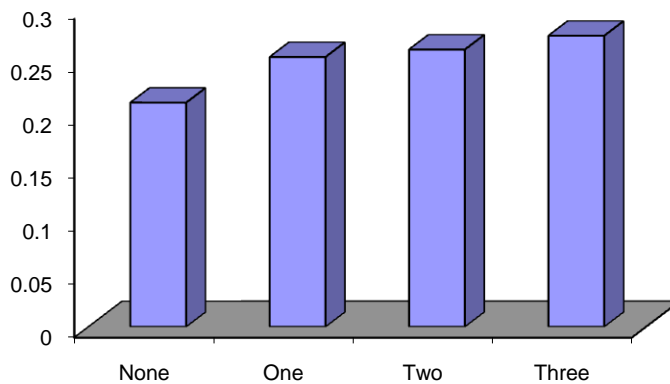
Percent Passing Basic Skills Tests

	2005*	2006*	2007*	2008*	2009*
Reading	75.4%	68.5%	70.1%	65.2%	67.3%
Writing	42.5%	44.0%	51.7%	47.9%	50.0%
Mathematics	41.0%	45.1%	44.8%	39.8%	42.7%

*Includes exemptions.

Basic Skills Test Performance
 First-Time Freshmen
 Fall 2005 to Fall 2009

Fall 2009 Freshmen - Number of Tests Passed

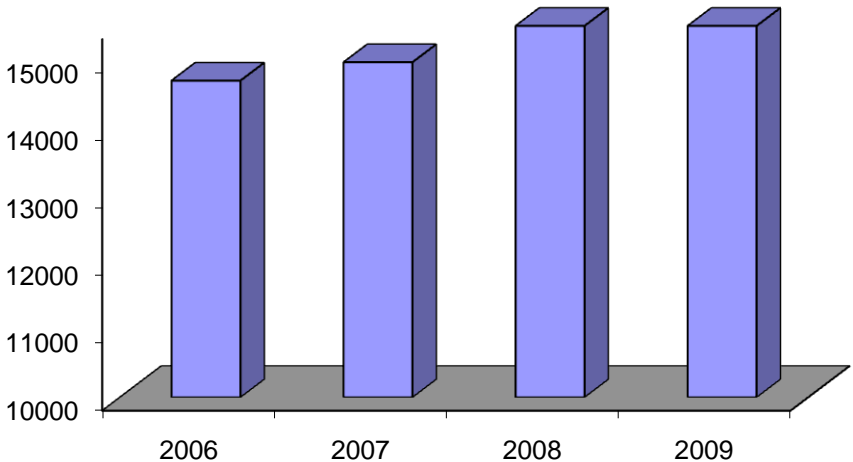


Number of Tests Passed

	2005*	2006*	2007*	2008*	2009*
None	14.7%	18.1%	16.9%	20.7%	21.1%
One	32.7%	29.9%	27.8%	28.9%	25.4%
Two	31.6%	28.6%	28.5%	27.0%	26.1%
Three	21.0%	23.4%	26.8%	23.4%	27.4%

*Includes exemptions.

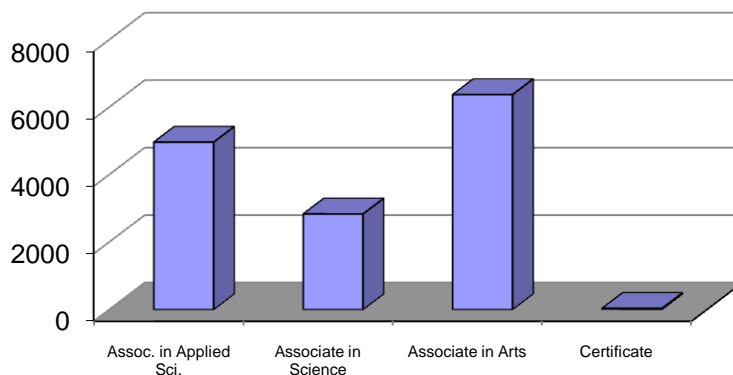
Credit Students
Enrollment Headcount
Fall 2005 to Fall 2009



2005	2006	2007	2008	2009
15,265	14,689	14,962	15,742	18,204

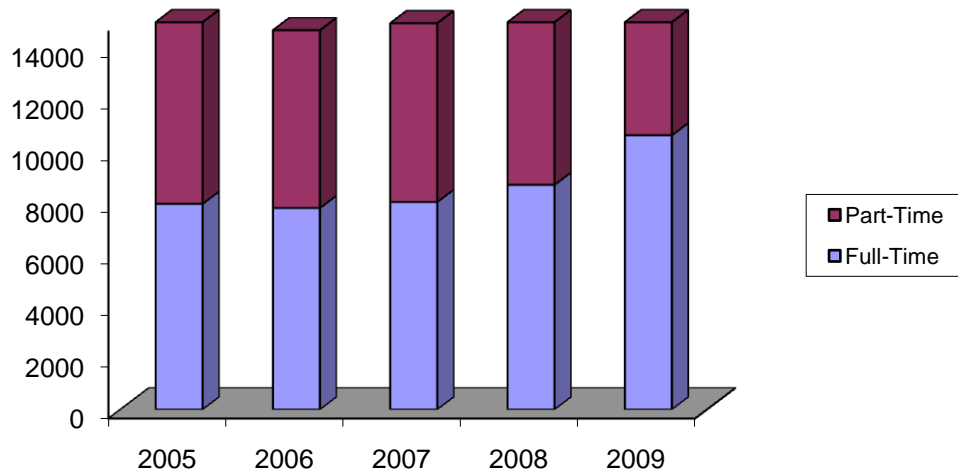
Credit Students
By Degree Type
Fall 2005 to Fall 2009

Fall 2009 Distribution of Degree Types



Degree Type	2005	2006	2007	2008	2009
Degree					
Assoc. in Applied Sci.	4464	4388	4640	4743	4967
Associate in Science	2199	1916	1751	2072	2838
Associate in Arts	4071	4353	4537	5076	6377
Certificate	5	25	17	42	39
Subtotal - Degree	10,739	10,682	10,945	11,933	14,221
Non-Degree					
College Now	3425	2981	3158	2914	3212
Non-College Now	1101	1026	859	895	771
Subtotal - Non-Degree	4526	4007	3902	3809	3983
All Students	15,265	14,689	14,847	15,742	18,204

Credit Students By Full-time and Part Time Status Fall 2005 to Fall 2009



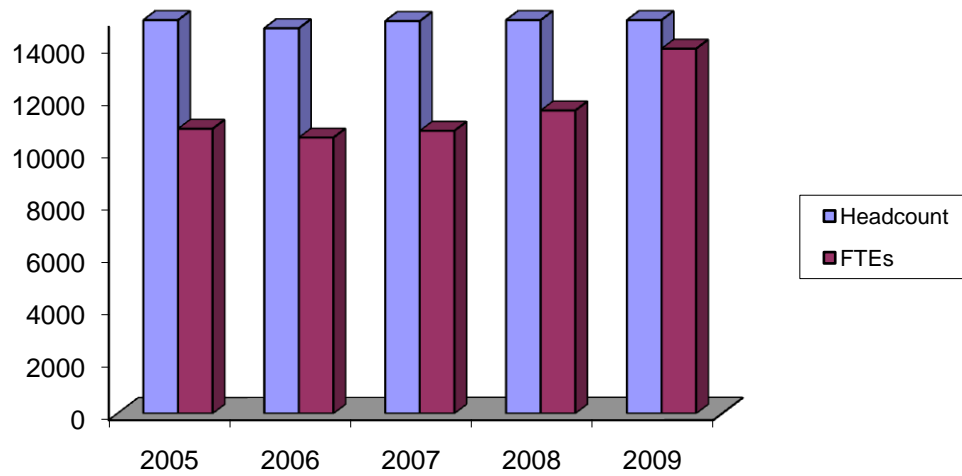
Fall	Full-Time	Percent	Part-Time	Percent	Total
2005	7968	52.2%	7297	47.8%	15,265
2006	7805	53.1%	6884	46.9%	14,689
2007	8038	53.7%	6924	46.3%	14,962
2008	8704	55.3%	7038	44.7%	15,742
2009	10621	58.3%	7583	41.7%	18,204

Degree-Seeking Students By Major Fall 2005 to Fall 2009

	2005	2006	2007	2008	2009	1-year change	4-year change
Accounting	576	571	540	554	612	10%	6%
Alcohol Subst Abuse Cert	1	11	7	20	18	*	*
Biology	975	755	772	912	1266	39%	30%
Broadcasting	220	229	195	173	215	24%	-2%
Business Admin.	1062	1056	1149	1326	1295	-2%	22%
Chemistry	22	29	37	41	46	12%	*
Community Health	47	43	67	94	144	53%	206%
Computer Info. Systems	241	199	196	223	266	19%	10%
Computer Science	132	124	102	109	147	35%	11%
Criminal Justice	0	0	0	0	452	*	*
Cul. Arts & Food Mgmt.	0	0	2	9	10	*	*
Early Childhood Ed. (AAS)	391	355	310	373	410	10%	5%
Early Childhood AS	316	285	291	298	383	29%	21%
Education Associate	22	15	12	4	1	*	*
Engineering Science	121	105	126	173	207	20%	71%
Entrepreneurial Studies Cert	4	10	4	5	6	*	*
Exercise Science	50	56	57	52	62	19%	*
Exercise Science Cert	1	6	3	8	6	*	*
Fashion Merch.	122	106	119	146	169	16%	39%
Fine Arts	70	82	80	86	136	58%	94%
Graphic Design	243	243	229	267	283	6%	16%
Journalism	85	82	81	97	95	-2%	12%
Journalism (AS)	0	0	12	18	35	*	*
Liberal Arts	4072	4354	4517	4770	5548	16%	36%
Maritime Technology	41	44	65	69	102	48%	*
Marketing Mgt.	1	0	0	0	0	*	*
Mathematics	35	45	55	64	79	23%	*
Mental Health	375	318	307	376	451	20%	20%
Nursing I (Pre-Clinical)	481	460	491	472	469	-1%	-2%
Nursing II (Clinical)	277	327	356	369	369	0%	33%
Office Admin & Tech	139	138	126	117	127	9%	-9%
Physical Therap Asst.	61	82	66	48	66	*	*
Physics	4	15	15	16	10	*	*
Pre-Physical Therapy	4	0	1	1	0	*	*
Sports Fitn Ther Rec	155	136	142	168	211	26%	36%
Performing Arts	98	87	79	91	97	7%	-1%
Speech Communication	49	66	60	92	95	3%	*
Surgical Technology	30	33	44	30	29	*	*
Tourism & Hospitality	198	195	198	226	277	23%	40%
Website Development	19	21	25	28	25	*	*

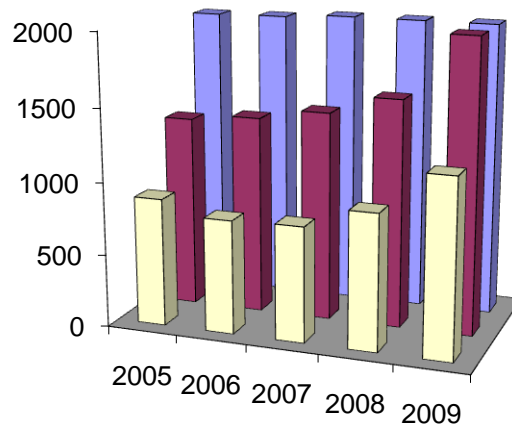
*Percent change calculated when there are more than 50 students in each year compared.

Credit Students
 Enrollment Headcounts
 and Full Time Equivalents (FTE's)
 Fall 2005 to Fall 2009



	2005	2006	2007	2008	2009
Headcount	15,265	14,689	14,962	15,742	18,204
FTEs	10,855	10,521	10,778	11,551	13,910

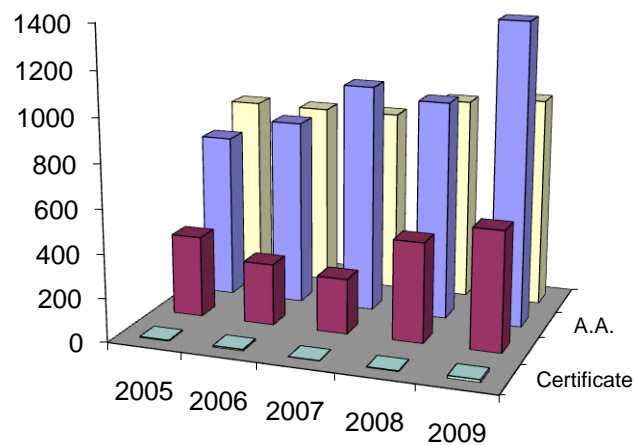
New Degree-Seeking Students Fall 2005 to Fall 2009



■ Readmitted Students
 ■ Advanced Standing Transfers
 ■ First-Time Freshmen

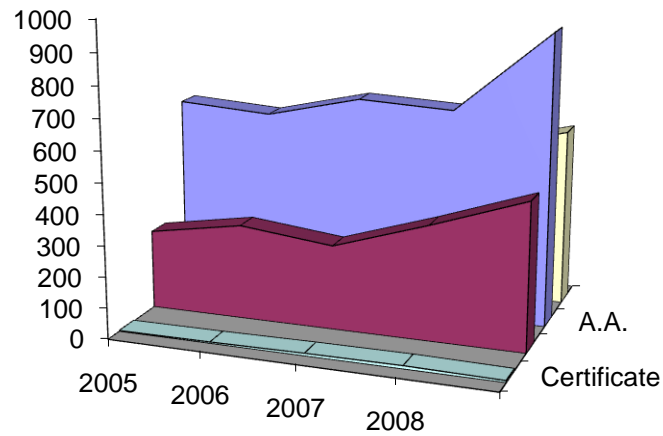
	2005	2006	2007	2008	2009
First-Time Freshmen	1970	1977	2136	2386	3111
Advanced Standing Transfers	1316	1359	1432	1558	2130
Readmitted Students	878	781	791	931	1216

New Credit Students
 First-Time Freshmen
 By Degree Type
 Fall 2005 to Fall 2009



Degree	2005	2006	2007	2008	2009
A.A.	749	847	1040	994	1523
A.S.	371	281	252	456	572
A.A.S.	846	842	842	928	1003
Certificate	4	7	2	3	13

New Credit Students
 Advanced Standing Transfers
 By Degree Type
 Fall 2005 to Fall 2009



Degree	2005	2006	2007	2008	2009
A.A.	636	617	689	676	1038
A.S.	257	308	274	372	488
A.A.S.	426	429	460	499	596
Certificate	3	5	9	11	8

First-Time Freshmen By Major Fall 2005 to Fall 2009

	2005	2006	2007	2008	2009	1-year change	4-year change
Accounting	77	89	89	80	98	23%	27%
Alc Sub Abuse Cert	0	0	0	0	2	*	*
Biology	174	96	121	171	224	31%	29%
Broadcasting	47	49	34	30	47	57%	0%
Business Administration	199	183	249	281	214	-24%	8%
Chemistry	3	8	7	4	6	*	*
Community Health	8	2	5	10	18	*	*
Computer Info Systems	35	44	30	54	52	-4%	49%
Computer Science	27	32	22	31	40	29%	48%
Criminal Justice AA	0	0	0	0	221		
Culinary Arts	0	0	0	5	6	*	*
Early Childhood AS	88	61	58	61	81	33%	-8%
Early Childhood Education	51	49	52	89	84	-6%	65%
Engineering Science	21	16	18	35	52	*	148%
Entrepreneurial Studies Cert	3	2	1	3	3	*	*
Exercise Sci Cert	1	5	1	3	1	*	*
Exercise Science	9	14	7	9	11	*	*
Fashion Merch.	11	18	23	36	46	*	318%
Fine Arts	11	10	8	23	30	*	*
Graphic Design	44	66	56	58	77	33%	75%
Journalism	33	21	23	33	40	*	21%
Journalism & Print Media	0	0	5	6	0	*	*
Liberal Arts	749	847	988	994	1153	16%	54%
Maritime Technology	8	9	16	20	27	*	*
Mathematics	6	4	3	8	6	*	*
Mental Health	39	32	36	48	68	42%	74%
Nursing I (Pre-Clinical)	162	173	143	149	188	26%	16%
Office Admin & Tech	22	28	21	17	1	*	*
Performing Arts	26	20	16	21	27	*	*
Physical Therap Asst	22	31	9	9	19	*	*
Physics	3	4	1	8	3	*	*
Pre-Physical Therapy	2	0	0	0	0	*	*
Speech Communication	12	8	10	10	21	*	*
Surgical Technology	3	0	1	0	0	*	*
Sports Fitn Ther Rec	33	26	43	42	57	36%	*
Tourism & Hospitality	29	25	37	34	30	-12%	*
Website Development	10	3	2	4	3	*	*

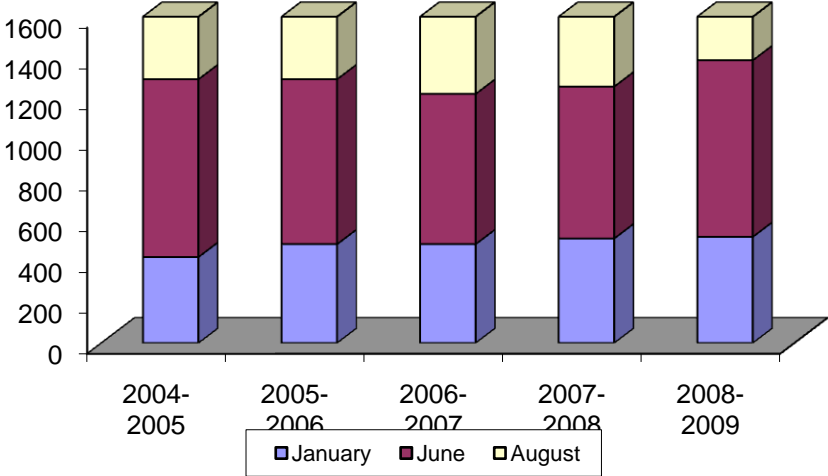
*Percent change calculated when there are more than 25 students in each year compared.

Advanced Standing Transfer Admissions By Major Fall 2005 to Fall 2009

	2005	2006	2007	2008	2009	1-year change	4-year change
Accounting	85	71	84	92	94	2%	11%
Alc Sub Abuse Cert	0	0	0	0	2	*	*
Biology	123	152	138	166	241	45%	96%
Broadcasting	23	21	15	21	24	*	*
Business Administration	129	165	168	179	204	14%	58%
Chemistry	5	7	12	9	7	*	*
Community Health	2	2	5	7	14	*	*
Computer Info. Systems	27	27	23	27	36	33%	33%
Computer Science	14	21	19	18	33	*	*
Criminal Justice AA	0	0	0	0	68	*	*
Culinary Arts	0	0	0	2	2	*	*
Early Childhood AS	31	42	52	68	69	1%	123%
Early Childhood Ed.	44	43	38	40	71	78%	61%
Engineering Science	18	18	17	35	35	0%	*
Entrepreneurial Studies Cert	0	4	0	0	2	*	*
Exercise Science	5	5	6	7	6	*	*
Exercise Science Cert	0	0	2	5	1	*	*
Fashion Merch.	12	11	17	19	13	*	*
Fine Arts	1	7	5	12	22	*	*
Graphic Design	22	20	19	15	21	*	*
Journalism	10	11	14	15	18	*	*
Journalism & Print Media	0	0	2	2	1	*	*
Liberal Arts	636	632	652	676	872	29%	37%
Maritime Technology	6	5	7	7	16	*	*
Mathematics	6	10	13	11	18	*	*
Mental Health	49	39	42	45	62	38%	27%
Nursing I (Pre-Clinical)	1	3	3	1	4	*	*
Office Admin & Tech	17	13	12	10	14	*	*
Performing Arts	8	8	12	6	9	*	*
Physical Therap. Asst.	0	2	3	3	2	*	*
Physics	0	2	1	2	0	*	*
Pre-Physical Therapy	0	0	0	0	0	*	*
Speech Communication	10	6	8	12	13	*	*
Surgical Technology	3	0	2	0	0	*	*
Sports Fitn Ther Rec	9	9	16	15	32	*	*
Tourism & Hospitality	15	29	18	25	43	72%	*
Website Development	4	3	1	2	2	*	*

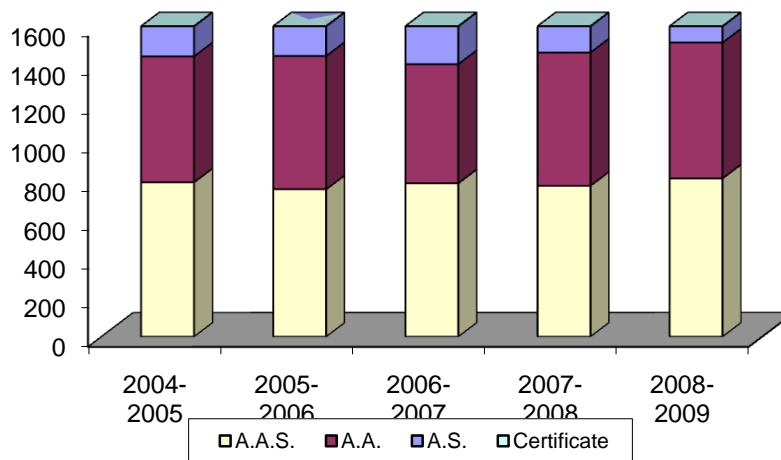
*Percent change calculated when there are more than 25 students in each year compared.

Degrees and Certificates Awarded
 By Academic Year
 2004-2005 to 2008-2009



	2004-2005	2005-2006	2006-2007	2007-2008	2008-2009
January	422	485	485	513	521
June	872	809	737	745	866
August	441	491	462	524	500
Total	1735	1785	1684	1782	1887

Degrees and Certificates Awarded By Degree Type 2004-2005 to 2008-2009



	<u>2004-2005</u>		<u>2005-2006</u>		<u>2006-2007</u>		<u>2007-2008</u>		<u>2008-2009</u>	
	No.	%	No.	%	No.	%	No.	%	No.	%
A.S.	280	16%	332	19%	272	16%	308	17%	359	19%
A.A.	649	37%	687	38%	614	36%	687	39%	700	37%
A.A.S.	796	46%	760	43%	791	47%	778	44%	816	43%
Certificate	10	1%	6	0%	7	0%	9	1%	12	1%
Total	1735		1785		1684		1782		1887	

Degrees and Certificates Awarded By Major 2004-2005 to 2008-2009

	2004- 2005	2005- 2006	2006- 2007	2007- 2008	2008- 2009	1-year change	4-year change
Accounting	116	109	134	109	121	10%	4%
Alc. & Sub. Abuse Couns.**	0	0	7	6	10	*	*
Biology	69	97	76	90	102	12%	48%
Broadcasting	50	47	40	50	33	-52%	-34%
Business Administration	245	194	201	242	250	3%	2%
Chemistry	5	2	2	5	2	*	*
Community Health	5	12	4	18	20	*	*
Computer Info. Systems	55	48	28	38	24	*	*
Computer Science	20	17	8	3	6	*	*
Cul Arts & Food Mgmt **	0	0	0	0	1	*	*
Early Childhood AS	74	73	55	33	30	-10%	-59%
Early Childhood Ed.	52	42	62	59	59	0%	13%
Education Associate	13	10	6	6	3	*	*
Engineering Science	10	5	8	8	8	*	*
Entrepreneurial Studies**	9	6	0	0	0	*	*
Exercise Science	3	4	4	9	4	*	*
Exercise Science**	1	0	0	0	0	*	*
Fashion Merch.	37	30	27	14	31	*	*
Fine Arts	10	9	12	15	9	*	*
Graphic Design	44	49	40	32	46	30%	5%
Journalism	11	7	0	0	0	*	*
Journalism & Print Media	0	0	4	9	10	*	*
Liberal Arts	649	687	614	687	700	2%	8%
Maritime Tech-Deck Cert	0	0	0	3	1	*	*
Maritime Technology	4	7	6	9	11	*	*
Marketing Mgt.	3	0	0	0	0	*	*
Mathematics	5	6	3	7	15	*	*
Mental Health	58	94	79	62	83	25%	43%
Nursing	70	86	121	118	137	14%	96%
Office Admin & Tech	31	25	23	25	20	*	*
Performing Arts	6	12	12	16	13	*	*
Physical Therap. Asst.	8	13	12	14	17	*	*
Physics	2	1	2	1	2	*	*
Pre-Physical Therapy	16	0	0	0	0	*	*
Speech Communication	0	9	22	20	30	*	*
Sports Fitn Ther Rec	19	31	22	17	22	*	*
Surgical Technology	0	0	6	12	15	*	*
Tourism & Hospitality	35	46	42	43	43	0%	23%
Website Development	0	0	2	2	9	*	*

*Percent change calculated when there are more than 25 students in each year compared.

**Certificate

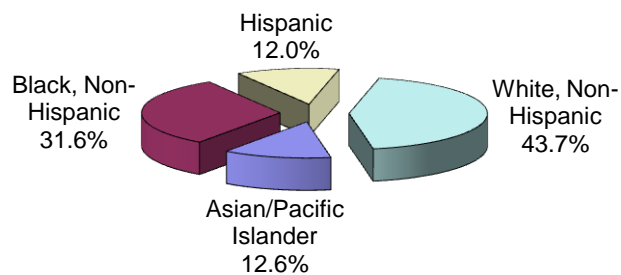
Degrees and Certificates Awarded By Gender 2004-2005 to 2008-2009



	Female	%	Male	%
2004-05	1083	62%	652	38%
2005-06	1134	64%	651	36%
2006-07	1061	63%	623	37%
2007-08	1089	61%	693	39%
2008-09	1177	62%	710	38%

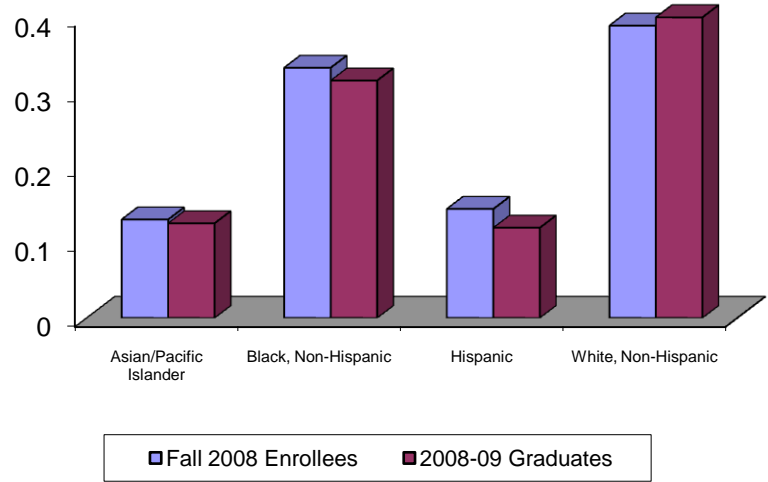
Degrees and Certificates Awarded By Ethnicity 2004-2005 to 2008-2009

2008-09 Graduates by Ethnicity



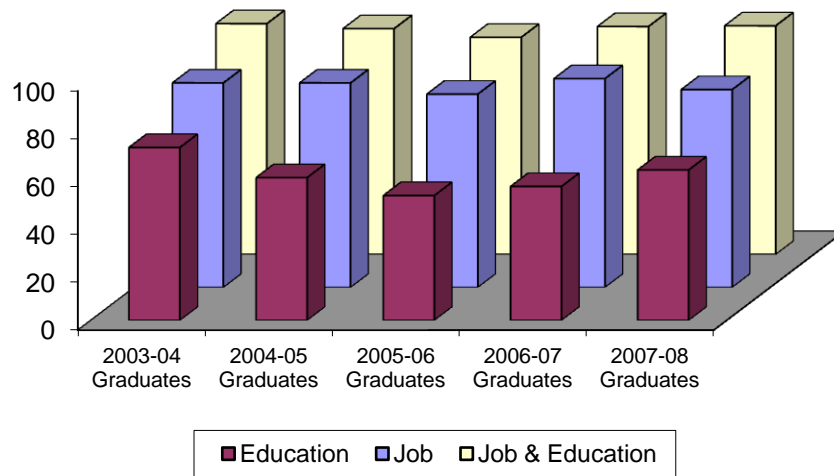
Ethnicity	2004-05	2005-06	2006-07	2007-08	2008-09
Asian/Pacific Islander	9.9%	11.8%	10.9%	11.5%	12.6%
Black, Non-Hispanic	33.3%	36.0%	34.7%	31.6%	31.6%
Hispanic	12.4%	14.4%	13.9%	12.4%	12.0%
White, Non-Hispanic	44.4%	37.8%	40.3%	44.2%	43.7%
Other	0.0%	0.0%	0.2%	0.3%	0.1%
Total	100.0%	100.0%	100.0%	100.0%	100.0%

Comparative Distributions of Graduates and Enrollees By Ethnicity 2008-2009



Ethnicity	Fall 2008 Enrollees	2008-09 Graduates
Asian/Pacific Islander	13.1%	12.6%
Black, Non-Hispanic	33.3%	31.6%
Hispanic	14.5%	12.0%
White, Non-Hispanic	38.9%	43.7%
Other	0.1%	0.1%
Total	100.0%	100.0%

Post-Graduate Outcomes



Six-month outcomes for graduates of vocational programs

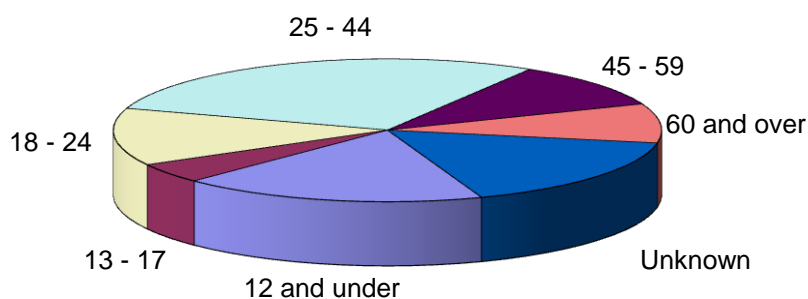
	Job	Education	Job & Education
2003-04 Graduates	85.4	72.2	96.4
2004-05 Graduates	85.4	59.6	94.3
2005-06 Graduates	80.7	52.1	90.7
2006-07 Graduates	87.2	55.9	95.2
2007-08 Graduates	82.6	62.8	95.5

Continuing Education
 Annual Enrollments
 By Semester and Program
 Fall 2009 - Summer 2010

Program	Fall 2009	Winter 2010	Spring 2010	Summer 2010	Total
Avocational Adults	864	333	429	181	1807
Community Service Adults	72	391	647	745	1855
Remedial Adults	312	233	252	180	977
Vocational Adults	141	225	374	48	788
Grants & Contracts Remedial	207	231	51	32	521
Grants & Contracts Vocational	96	158	59	74	387
College for Kids	1250	1236	903	2215	5604
CUNY Language Immersion (CLIP)	214	220	191	206	831
Diploma Now	137	224	79	0	440
English as a Second Language	1283	1188	1331	642	4444
ESL Institute	328	307	271	282	1188
High School Equivalency / ABE	640	410	468	297	1815
SAT	32	32	27	18	109
Regents Preparation	39	0	25	0	64
TOEFL	27	23	0	0	50
Certificate Programs	610	642	588	312	2152
Insurance	12	12	0	0	24
Real Estate	10	0	0	0	10
Taxi Program	573	567	412	440	1992
Total	6847	6432	6107	5672	25,058

Continuing Education
 Annual Enrollments
 By Age
 Fall 2009 - Summer 2010

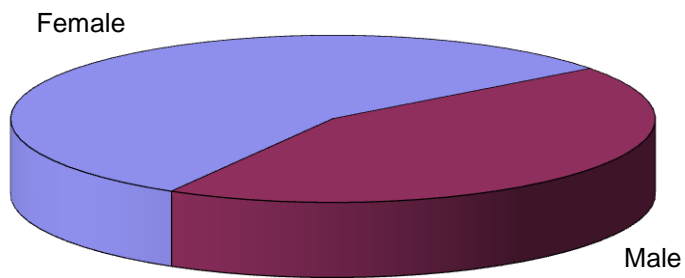
2009 - 2010 ACE Enrollments Age Distribution



Age	Number	Percent of Total	Percent of Known
12 and under	4504	18.0%	21.5%
13 - 17	1134	4.5%	5.4%
18 - 24	3254	13.0%	15.6%
25 - 44	7212	28.8%	34.5%
45 - 59	2583	10.3%	12.4%
60 and over	2221	8.9%	10.6%
Unknown	4150	16.6%	...
Total	25,058	100.0%	100.0%

Continuing Education
 Annual Enrollments
 By Gender
 Fall 2009 - Summer 2010

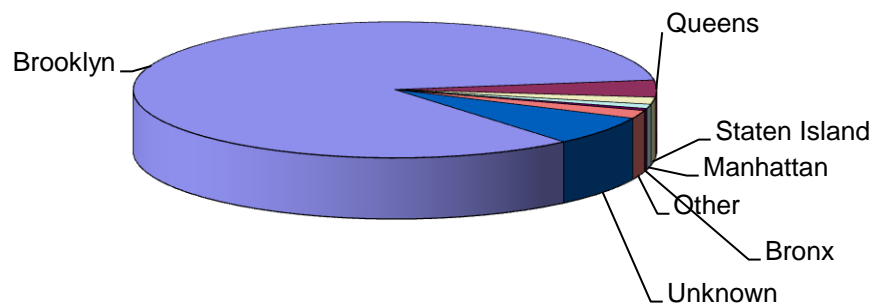
2009 - 2010 ACE Enrollments Gender Distribution



	Female		Male	
	Number	Percent	Number	Percent
Fall 2005	3794	55.4%	3053	44.6%
Winter 2006	3483	54.2%	2949	45.8%
Spring 2006	3648	59.7%	2459	40.3%
Summer 2006	3201	56.4%	2471	43.6%
Total	14,126	56.4%	10932	43.6%

Continuing Education
 Annual Enrollments
 By Borough of Residence
 Fall 2009 - Summer 2010

2009 - 2010 ACE Enrollments by Borough

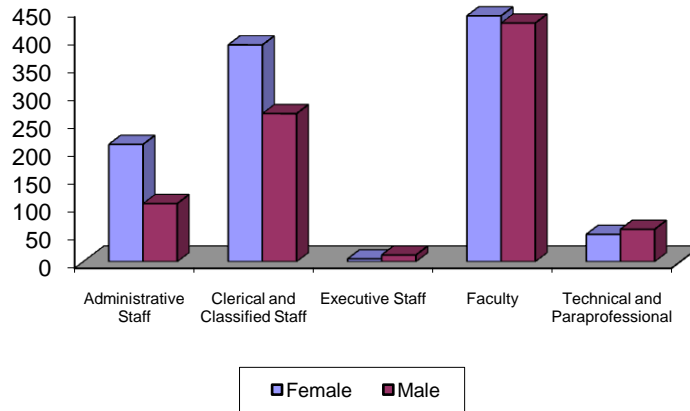


Borough	Number	Percent of Total	Percent of Known
Brooklyn	21,011	83.8%	90.1%
Queens	1012	4.0%	4.3%
Staten Island	423	1.7%	1.8%
Manhattan	252	1.0%	1.1%
Bronx	129	0.5%	0.6%
Other	485	1.9%	2.1%
Unknown	1746	7.0%	...
Total	25,058	100.0%	100.0%

Continuing Education
 ESL Institute
 Enrollments by Country of Origin
 Fall 2009 - Summer 2010

	Number	Percent
Albania	14	1.2%
Azerbaijan	15	1.3%
Belarus	17	1.4%
China	91	7.7%
Columbia	14	1.2%
Dominican Republic	11	0.9%
Ecuador	16	1.3%
Georgia	18	1.5%
Haiti	47	4.0%
Israel	11	0.9%
Japan	9	0.8%
Jordan	9	0.8%
Kazakhstan	57	4.8%
Korea	27	2.3%
Kyrgyzstan	8	0.7%
Mexico	15	1.3%
Moldova	15	1.3%
Pakistan	13	1.1%
Poland	27	2.3%
Russia	248	20.9%
Taiwan	21	1.8%
Tajikistan	43	3.6%
Turkey	152	12.8%
Ukraine	94	7.9%
Uzbekistan	75	6.3%
Vietnam	9	0.8%
42 Other Countries	112	9.4%
Total	1188	100.0%

Full Time and Part Time Employment, Job Category and Gender Fall 2009



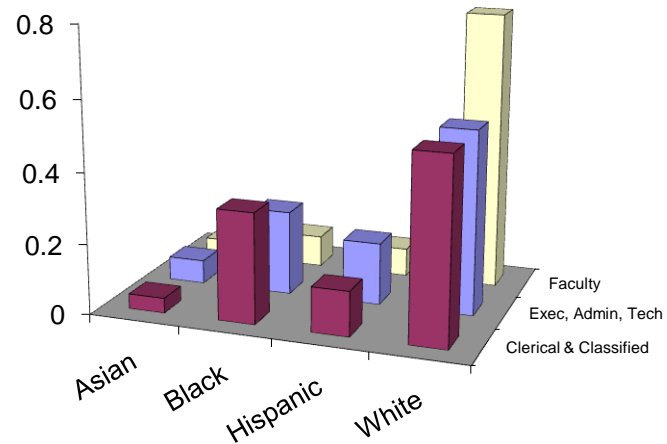
Full Time	Female	%	Male	%
Administrative Staff	109	27%	60	15%
Clerical and Classified Staff	95	24%	142	36%
Executive Staff	5	1%	12	3%
Faculty	170	42%	155	39%
Technical and Paraprofessional	23	6%	30	8%
Full Time Total	402	100%	399	100%

Part Time	Female	%	Male	%
Administrative Staff	101	15%	44	9%
Clerical and Classified Staff	293	42%	123	26%
Faculty	270	39%	272	58%
Technical and Paraprofessional	26	4%	28	6%
Part Time Total	690	100%	467	100%

Full Time and Part Time	Female	%	Male	%
Administrative Staff	210	19%	104	12%
Clerical and Classified Staff	388	36%	265	31%
Executive Staff	5	0%	12	1%
Faculty	440	40%	427	49%
Technical and Paraprofessional	49	4%	58	7%
Full and Part Time Total	1092	100%	866	100%

Note. Includes substitute appointments.

Full Time Employees
By Job Category and Racial/Ethnic Origin
Fall 2009



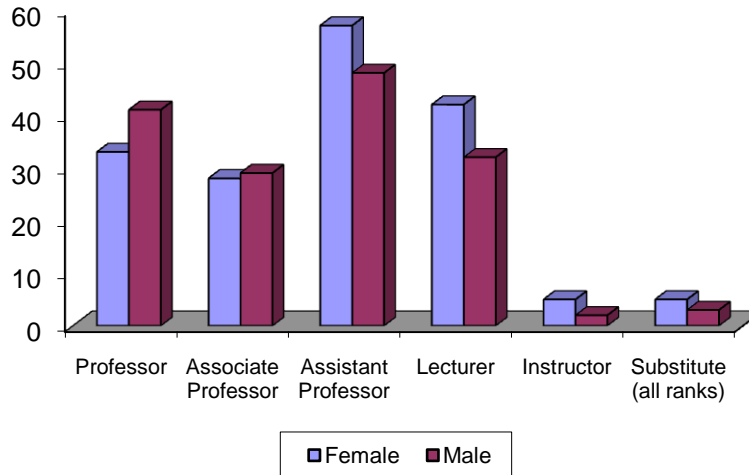
Job Category	Asian & Pacific Islander		Black, Non-Hispanic		Hispanic		Native Am & Alaska Native		White, Non-Hispanic		Total
	N	%	N	%	N	%	N	%	N	%	
Administrative Staff	13	8%	45	27%	34	20%	0	0%	77	46%	169
Clerical and Classified Staff	10	4%	74	31%	30	13%	0	0%	123	52%	237
Executive Staff	2	12%	1	6%	1	6%	0	0%	13	76%	17
Faculty	15	5%	29	9%	26	8%	0	0%	255	78%	325
Technical and Paraprofessional	1	2%	11	21%	7	13%	0	0%	34	64%	53
<hr/>											
Subtotal Exec Admin Tech	16	7%	57	24%	42	18%	0	0%	124	52%	239
Total	41	5%	160	20%	98	12%	0	0%	502	63%	801

Full Time Employees

By Job Category, Gender and Racial/Ethnic Origin, Fall 2009

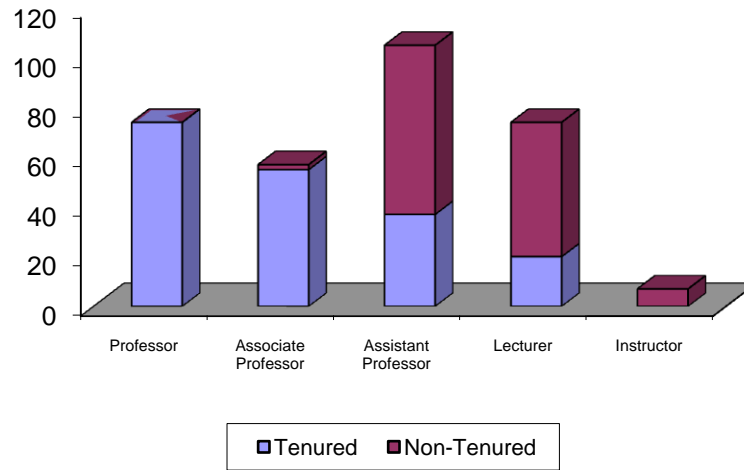
Job Category		Asian & Pacific Islander		Black, Non-Hispanic		Hispanic		Native Am & Alaska Native		White, Non-Hispanic		Total
		N	%	N	%	N	%	N	%	N	%	
Administrative Staff	Female	7	6%	31	28%	23	21%	0	0%	48	44%	109
	Male	6	10%	14	23%	11	18%	0	0%	29	48%	60
Clerical and Classified Staff	Female	2	2%	20	21%	8	8%	0	0%	65	68%	95
	Male	8	6%	54	38%	22	15%	0	0%	58	41%	142
Executive Staff	Female	0	0%	1	20%	0	0%	0	0%	4	80%	5
	Male	2	17%	0	0%	1	8%	0	0%	9	75%	12
Faculty	Female	4	2%	20	12%	15	9%	0	0%	131	77%	170
	Male	11	7%	9	6%	11	7%	0	0%	124	80%	155
Technical and Paraprofessional	Female	1	4%	5	22%	2	9%	0	0%	15	65%	23
	Male	0	0%	6	20%	5	17%	0	0%	19	63%	30
Total		41	5%	160	20%	98	12%	0	0%	502	63%	801

Full Time Faculty
By Rank and Gender
Fall 2009



Faculty Rank	Female	% of Females	Male	% of Males	Total
Professor	33	19.4%	41	26.5%	74
Associate Professor	28	16.5%	29	18.7%	57
Assistant Professor	57	33.5%	48	31.0%	105
Lecturer	42	24.7%	32	20.6%	74
Instructor	5	2.9%	2	1.3%	7
Substitute (all ranks)	5	2.9%	3	1.9%	8
Total	170	100.0%	155	100.0%	325

Full Time Faculty
By Tenure Status
Fall 2009



Faculty Rank	Tenured	%	Non-Tenured	%	Total
Professor	74	97.4%	0	0.0%	76
Associate Professor	55	94.8%	2	3.4%	58
Assistant Professor	37	34.9%	68	64.2%	106
Lecturer	20	26.3%	54	71.1%	76
Instructor	0	0.0%	7	77.8%	9
Total	186	57.2%	131	40.3%	325