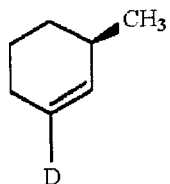


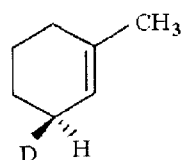
Answer Key

Testname: REVIEW QUESTIONS CHAPTER 6.TST

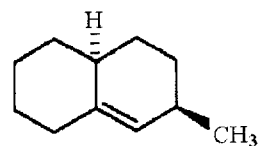
18)



19)

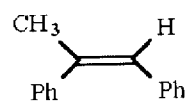


20)

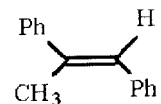


21) $\text{CH}_3\text{Br} < \text{CH}_3\text{CH}_2\text{CH}_2\text{I} < \text{CH}_3\text{CHBrCH}_3 < \text{CH}_3\text{CHIICH}_3 < (\text{CH}_3)_3\text{CI}$

22)



23)



24) $\text{CH}_3\text{I} + \text{NaOCH}(\text{CH}_3)_2$