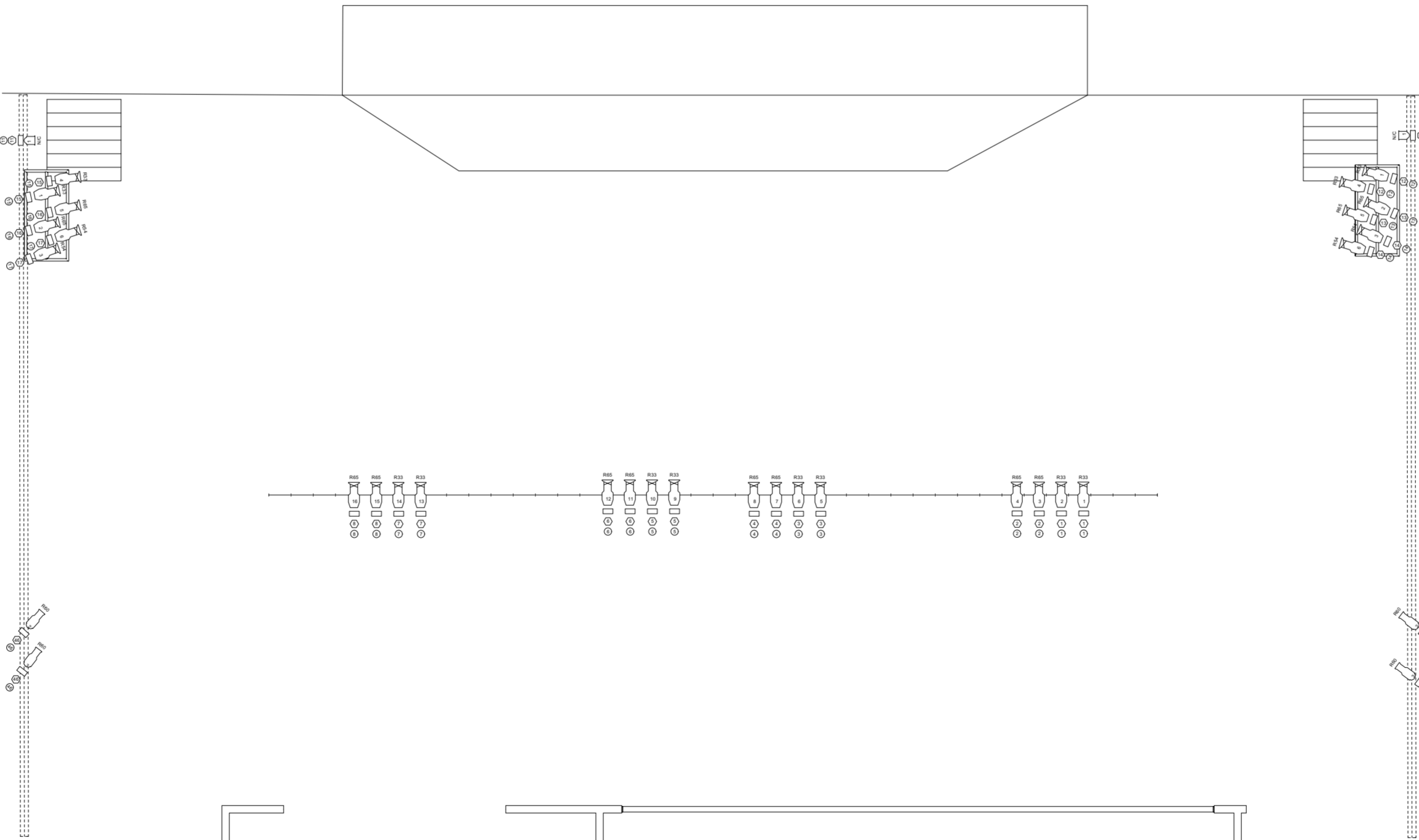
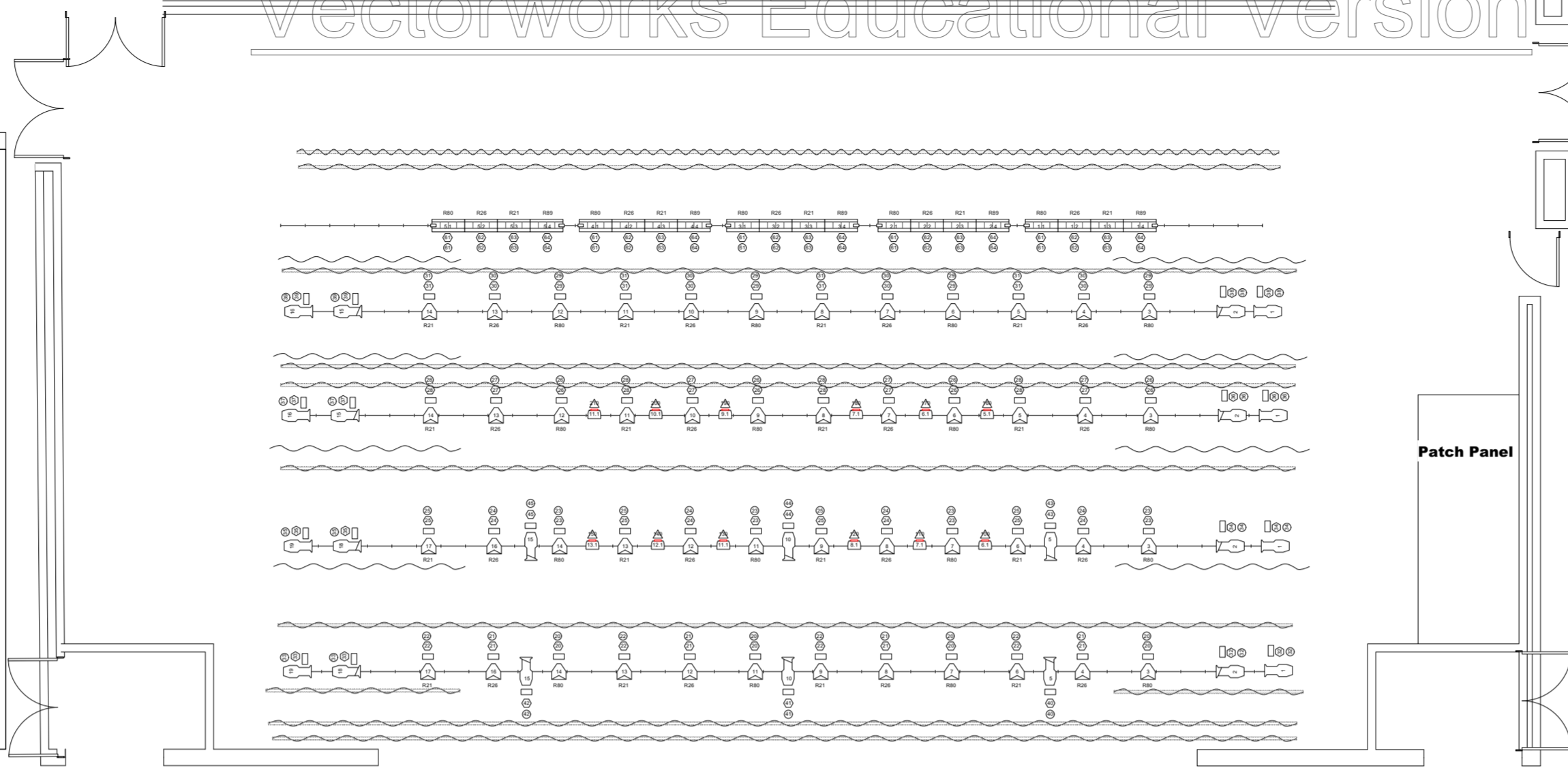


Item	Dist.	No.
-CYC	382"	44
-Blackout	387"	43
	341"	42
	344"	41
	339"	40
	332"	39
-6th Electric	320"	38
	313"	37
-Black Scrim	305"	36
-Legs #3	291"	35
-Border	294"	34
	289"	33
	279"	32
-4th Electric	269"	31
	262"	30
	255"	29
-ACOUSTICAL SHELL #3	241"	28
-Legs #4	240"	27
-Border	239"	26
	229"	25
-Mid Stage Blackout	223"	24
	219"	23
	215"	22
-3rd Electric	205"	21
-Limited use traveler track	193"	20
	193"	19
-Legs #3	184"	18
-Border	172"	17
-ACOUSTICAL SHELL #2	166"	16
	158"	15
	148"	14
	134"	13
-2nd Electric	129"	12
	109"	11
-Legs #2	101"	10
	95"	9
-ACOUSTICAL SHELL #1	85"	8
-Blackout	77"	7
-SCREEN	67"	6
	51"	5
-1st Electric	45"	4
-Legs #1	38"	3
-House Curtain	18"	2
-Grand Teaser	0"	1



**Leon M. Goldstein Performing Arts Center**  
 Kingsborough Community College  
 Brooklyn, NY

Repertory Light Plot  
 Designed By: Paul Winnick  
 Drawn: Paul Winnick 11/1/2021